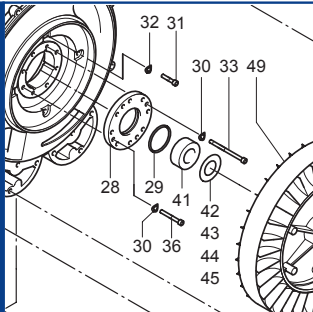


SV 7.380



SERVICE

BECKER
D-42279 Wuppertal
www.becker-international.com

No. **A** ← **Index Variante**

year XXXX

type **SV 7.380-XX**

frequency XXXX Hz

speed XXXX min⁻¹

power required XXXX kW

inlet capacity XXXX m³/h

pressure + XXXX mbar

vacuum - XXXX mbar

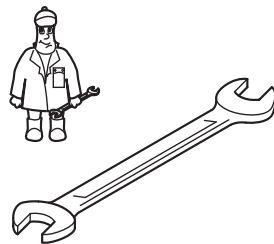
Made in Germany



Ersatzteilliste
Spare parts list
Liste de pièces de rechange
Listino pezzi di ricambio
Lista de piezas de recambio
Lista de peças sobresselentes
Reserveonderdelenlijst
Atsarginių dalių sąrašas
Varuosad nimekirja
Rezerves daļu saraksts

Reservedelsliste
Reservdelslista
Varaosaluettelo
Reservedelsliste
Wykaz części zamiennych
Tartalékalkatrész lista
Seznam náhradních dílů
Seznam nadomestnih delov
Zoznam náhradných dielov
Rezervni dijelovi popis

Lista pieselor de schimb
Páirteanna spártha liosta
Κατάλογος ανταλλακτικών
Yedek parça listesi
Списък на резервните части
Перечень запасных частей
スペアパーツリスト
예비 부품 목록
备用零件目录



Pos.	Menge ¹⁾ Quantity Quantité Quantità Cantidad	Bestell-Nr. Ident No. No. Identification No. Identificazione No. de pedido	Bezeichnung Description Designation Designazione Descripción
125	1	909548 00000	Filterpatrone, Filter cartridge, Cartouche Filtrante, Cartuccia filtro, Cartucho de filtro

¹⁾ erforderliche Bestellmenge / necessary order quantity / quantité nécessaire / quantità di ordinazione necessari / cantidad necesario

Wartung
Maintenance
Entretien
Manutenzione
Mantenimiento

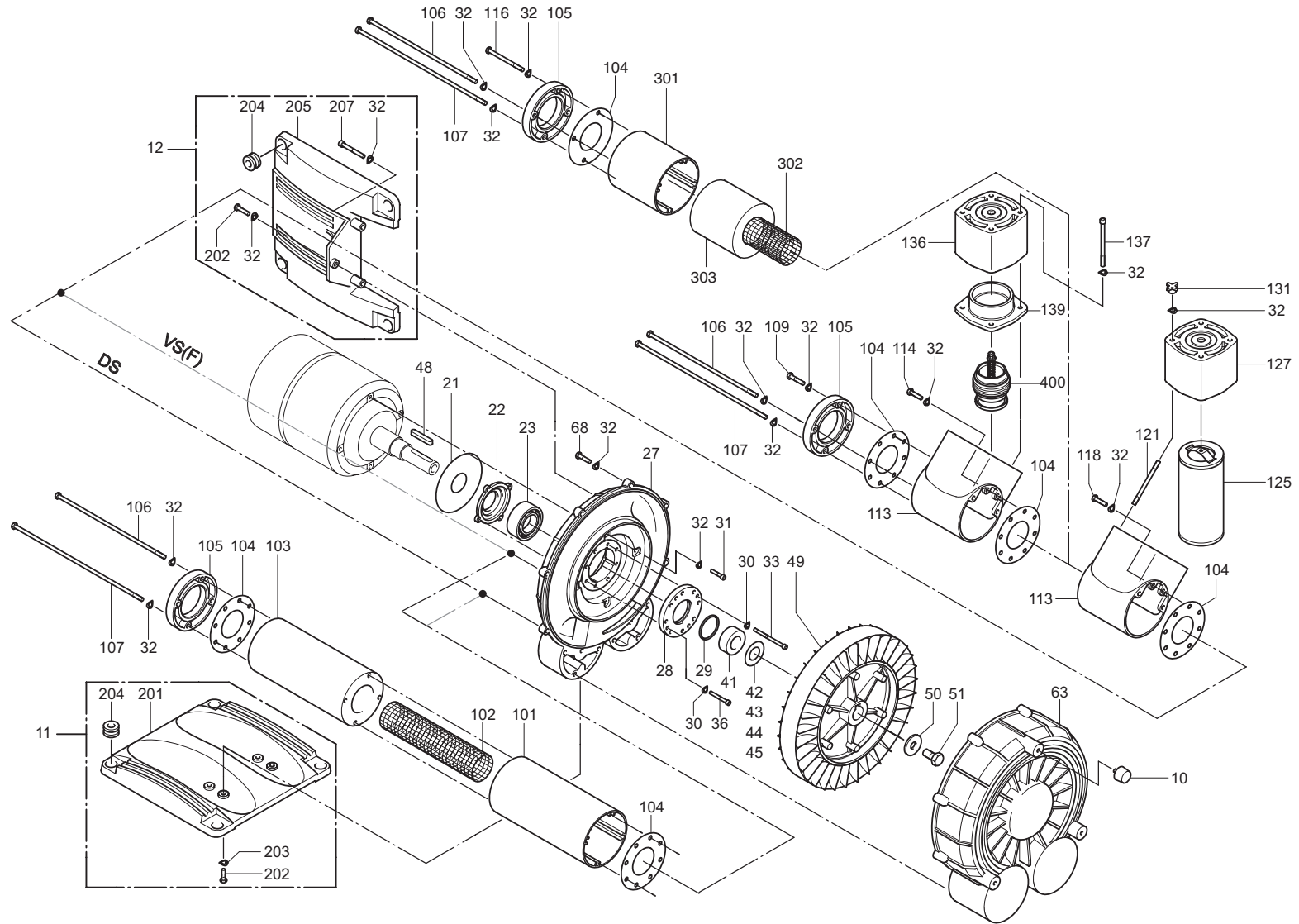


SERVICE
www.becker-international.com
Sales and service network

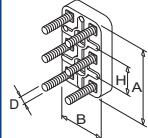
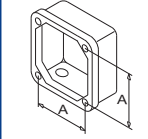
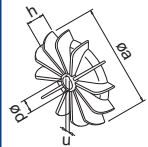
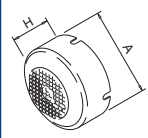
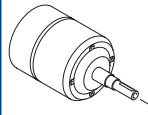
SV 7.380/1 Standard



Variante



SERVICE ?



SV 7.380/2 Standard

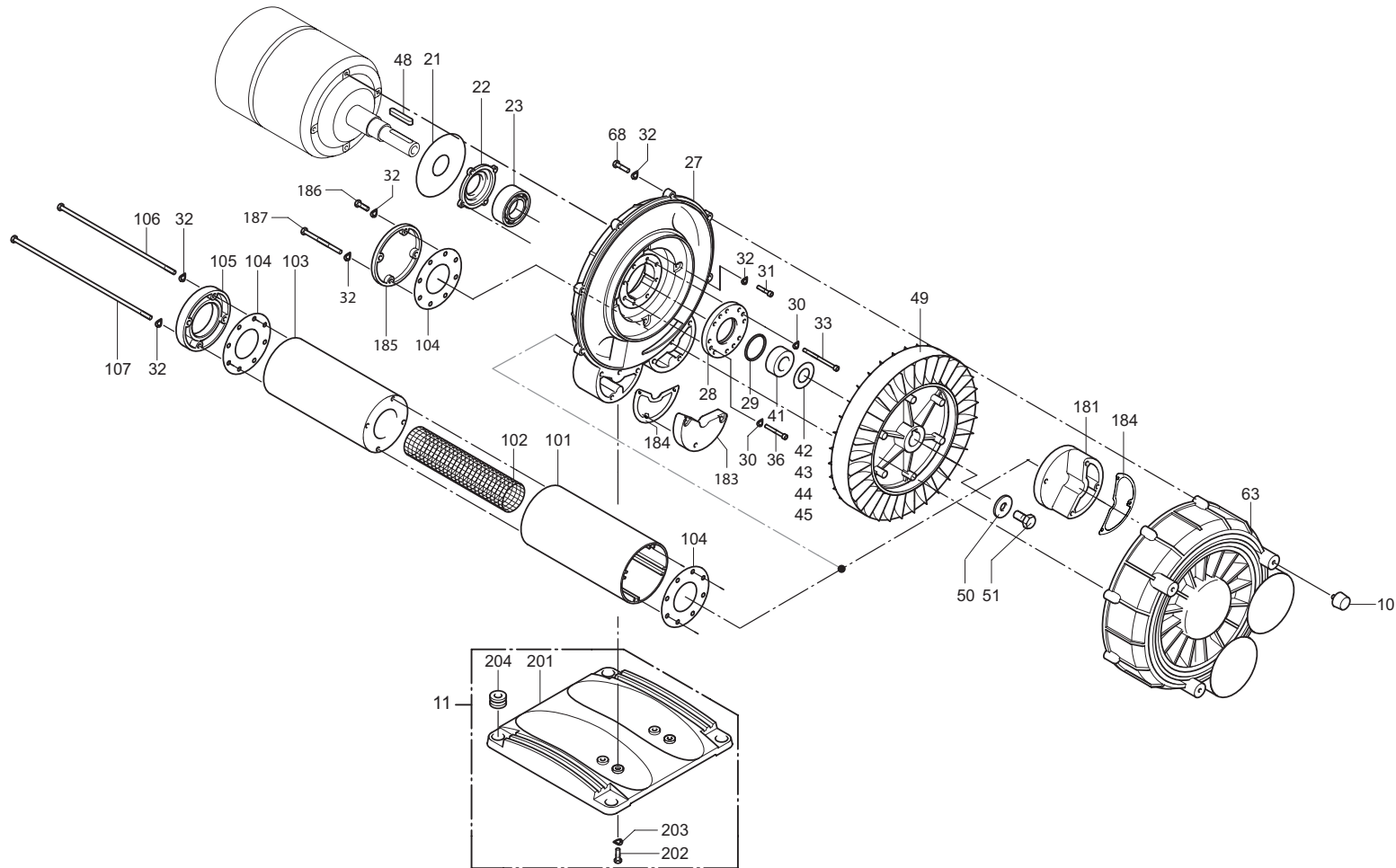


Variante

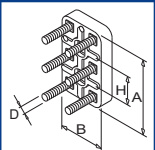
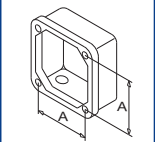
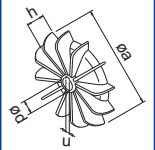
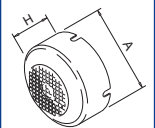
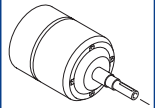



SV 7.380/2-XX

① /2-501
 Sonderausführung
 Special design
 Fabrication spéciale
 Modello speciale
 Versión especial




SERVICE ?



INDEX	Pos.	Bestell Nr.	Beschreibung	
SV 7.380	U	570400 19800	UMBAUSATZ /1➔/2 (POS: 32, 104, 181, 183, 184, 185, 186, 187)	
	10	741315 00000	GUMMIPUFFER	
	11	515100 19800	FUSS	
	12	515101 19800	FUSS, SEITLICH	
	21	018300 94000	SCHUTZSCHEIBE	
	22	001103 94001	LAGERDECKEL	
	23	906611 10000	WÄLZLAGER	
	27	000100 19800	GEHÄUSE	
	28	001103 19801	LAGERDECKEL	
	29	911308 00000	DICHTUNGSSCHLAUCH	
	30	948503 00000	FEDERING	
	31	945308 00000	INNENSECHSKANTSCHRAUBE	
	32	951703 00000	FEDERSCHEIBE	
	33	945373 00000	INNENSECHSKANTSCHRAUBE	
	36	945313 00000	INNENSECHSKANTSCHRAUBE	
	41	013900 19800	DICHTBUCHSE	
	42	911468 00000	DISTANZSCHEIBE 32X55X0,025	
	43	911469 00000	DISTANZSCHEIBE 32X55X0,050	
	44	911470 00000	DISTANZSCHEIBE 32X55X0,100	
	45	911471 00000	DISTANZSCHEIBE 32X55X0,200	
	48	947742 00000	PASSFEDER	
	49	000600 19800	LAUFRAD	
	50	001900 24000	SICHERUNGSBLECH	
	51	001800 24000	WELLENABSCHLUSSCHRAUBE	
	63	000200 19800	GEHÄUSEDECKEL	
	68	945225 00000	SECHSKANTSCHRAUBE	
	101	007400 19900	SCHALLDÄMPFERGEHÄUSE	
	102.1	007600 94000	SIEBROHR (SV 7.380/1-01)	
	102.2	007601 94000	SIEBROHR (SV 7.380/2-501)	
	103	907704 10000	DÄMPFER	
	104	907500 19800	DICHTUNG	
	105	007805 19800	GEWINDEFLANSCH	
	106	903808 01000	ZUGANKERSCHRAUBE	
	107	903809 01000	ZUGANKERSCHRAUBE	
	109	945226 00000	SECHSKANTSCHRAUBE	
	113	040100 19800	FILTERGEHÄUSE	
	114	945321 00000	INNENSECHSKANTSCHRAUBE	
	116	903807 01000	ZUGANKERSCHRAUBE	
	118	945372 00000	INNENSECHSKANTSCHRAUBE	
	121	951038 00000	STIFTSCHRAUBE	
	125	909548 00000	FILTERPATRONE (1x)¹⁾	
	127	040202 19800	FILTERDECKEL	
	131	921503 00000	STERNGRIF	
	136	040203 19800	FILTERDECKEL	
	137	945383 00000	INNENSECHSKANTSCHRAUBE	
	139	016600 19800	ANSCHLUSSSTÜCK	
	181	015500 19800	REDUZIERSTÜCK	
	183	005601 19800	DECKEL	
	184	907502 19800	DICHTUNG	
	185	005600 19800	DECKEL	
	186	945222 00000	SECHSKANTSCHRAUBE	
	187	945155 00000	SECHSKANTSCHRAUBE	
	201	015102 19800	FUSS	
	202	945224 00000	SECHSKANTSCHRAUBE	
	203	949451 00000	UNTERLEGSCHNEIBE	
	204	951906 00000	KABELTÜLLE	
	205	015101 19800	FUSS	
	207	945328 00000	INNENSECHSKANTSCHRAUBE	

¹⁾ erforderliche Bestellmenge / Wartung (F / DSF / VSF)

INDEX	Pos.	Bestell Nr.	Beschreibung	
	301	007401 19800	SCHALLDÄMPFERGEHÄUSE	
	302	907600 80000	SIEBROHR	
	303	907704 20000	DÄMPFER	
	400	733701 99609	VENTILEINSATZ	

¹⁾ erforderliche Bestellmenge / Wartung (F / DSF / VSF)

INDEX	Pos.	Ident No.	Description
SV 7.380	U	570400 19800	CONVERSION KIT /1➔/2 (POS: 32, 104, 181, 183, 184, 185, 186, 187)
	10	741315 00000	RUBBER BUFFER
	11	515100 19800	FOOT
	12	515101 19800	FOOT, LATERAL
	21	018300 94000	WASHER
	22	001103 94001	BEARING COVER
	23	906611 10000	BALL BEARING
	27	000100 19800	PUMP BODY
	28	001103 19801	BEARING COVER
	29	911308 00000	SEAL
	30	948503 00000	LOCK WASHER
	31	945308 00000	SOCKET HEAD SCREW
	32	951703 00000	LOCKING WASHER
	33	945373 00000	SOCKET HEAD SCREW
	36	945313 00000	SOCKET HEAD SCREW
	41	013900 19800	SEALING BUSH
	42	911468 00000	DISTANCE DISC 32X55X0,025
	43	911469 00000	DISTANCE DISC 32X55X0,05
	44	911470 00000	DISTANCE DISC 32X55X0,1
	45	911471 00000	DISTANCE DISC 32X55X0,2
	48	947742 00000	KEY
	49	000600 19800	IMPELLER
	50	001900 24000	LOCKING PLATE
	51	001800 24000	SCREW
	63	000200 19800	HOUSING LID
	68	945225 00000	HEX-HEAD SCREW
	101	007400 19900	SILENCER HOUSING
102.1	007600 94000	STRAINER TUBE (SV 7.380/1-01)	
102.2	007601 94000	STRAINER TUBE (SV 7.380/2-501)	
103	907704 10000	SILENCER SPONGE	
104	907500 19800	SEAL	
105	007805 19800	FLANGE	
106	903808 01000	SCREW	
107	903809 01000	SCREW	
109	945226 00000	HEX. HEAD SCREW	
113	040100 19800	FILTER HOUSING	
114	945321 00000	SOCKET HEAD SCREW	
116	903807 01000	SCREW	
118	945372 00000	SOCKET HEAD SCREW	
121	951038 00000	STUD	
125	909548 00000	FILTER CARTRIDGE (1x)¹⁾	
127	040202 19800	FILTER COVER	
131	921503 00000	STAR GRIP	
136	040203 19800	FILTER COVER	
137	945383 00000	SOCKET HEAD SCREW	
139	016600 19800	CONNECTING PIECE	
181	015500 19800	REDUCING PIECE	
183	005601 19800	CAP	
184	907502 19800	GASKET	
185	005600 19800	CAP	
186	945222 00000	HEX HEAD SCREW	
187	945155 00000	HEX-HEAD SCREW	
201	015102 19800	FOOT	
202	945224 00000	HEX-HEAD SCREW	
203	949451 00000	WASHER	
204	951906 00000	RUBBER BUSHING	
205	015101 19800	FOOT	
207	945328 00000	SOCKET HEAD SCREW	

¹⁾ necessary order quantity / maintenance (F / DSF / VSF)

INDEX	Pos.	Ident No.	Description
	301	007401 19800	SILENCER HOUSING
	302	907600 80000	STRAINER GAUZE
	303	907704 20000	SILENCER SPONGE
	400	733701 99609	VALVE CORE

¹⁾ necessary order quantity / maintenance (F / DSF / VSF)

INDEX	Pos.	No. Identification	Designation
SV 7.380	U	570400 19800	KIT DE TRANSFORMATION /1➔/2 (POS: 32, 104, 181, 183, 184, 185, 186, 187)
	10	741315 00000	AMORTISSEUR EN CAOUTCHOUC
	11	515100 19800	PIED
	12	515101 19800	PIED
	21	018300 94000	PLAQUE
	22	001103 94001	COUVERCLE DE ROULEMENTE
	23	906611 10000	ROULEMENT A BILLES
	27	000100 19800	CORP DE POMPE
	28	001103 19801	COUVERCLE DE ROULEMENT
	29	911308 00000	JOINT
	30	948503 00000	RONDELLE ÉLASTIQUE
	31	945308 00000	VIS HEXAGONALE INTERNE
	32	951703 00000	RONDELLE À RESSORT
	33	945373 00000	VIS HEXAGONALE INTERNE
	36	945313 00000	VIS HEXAGONALE INTERNE
	41	013900 19800	BOISSEAU ETANCHANT
	42	911468 00000	DISQUE AJUSTAGE 32X55X0,025
	43	911469 00000	DISQUE AJUSTAGE 32X55X0,05
	44	911470 00000	DISQUE AJUSTAGE 32X55X0,1
	45	911471 00000	DISQUE AJUSTAGE 32X55X0,2
	48	947742 00000	CLAVETTE
	49	000600 19800	ROUE
	50	001900 24000	RONDELLE DE SECURITE
	51	001800 24000	VIS
	63	000200 19800	COUVERCLE
	68	945225 00000	VIS HEXAGONALE
	101	007400 19900	CARCASSE SILENCIEUX
102.1	007600 94000	GRILLE POUR SILENCIEUX (SV 7.380/1-01)	
102.2	007601 94000	GRILLE POUR SILENCIEUX (SV 7.380/2-501)	
103	907704 10000	MOUSSE POUR SILENCIEUX	
104	907500 19800	JOINT	
105	007805 19800	BRIDE	
106	903808 01000	VIS	
107	903809 01000	VIS	
109	945226 00000	VIS HEXAGONALE	
113	040100 19800	CARTER FILTRE	
114	945321 00000	VIS HEXAGONALE INTERNE	
116	903807 01000	VIS	
118	945372 00000	VIS HEXAGONALE INTERNE	
121	951038 00000	GOUJON	
125	909548 00000	CARTOUCHE FILTRANTE (1x) ¹⁾	
127	040202 19800	COUVERCLE DU FILTRE	
131	921503 00000	POIGNEE-ETOILE	
136	040203 19800	COUVERCLE DU FILTRE	
137	945383 00000	VIS HEXAGONALE INTERNE	
139	016600 19800	PIECE DE RACCORDEMENT	
181	015500 19800	PIECE DE REDUCTION	
183	005601 19800	COUVERCLE	
184	907502 19800	JOINT	
185	005600 19800	COUVERCLE	
186	945222 00000	VIS SIX-PANS	
187	945155 00000	VIS HEXAGONALE	
201	015102 19800	PIED	
202	945224 00000	VIS HEXAGONALE	
203	949451 00000	RONDELLE	
204	951906 00000	PROTECTION EN CAOUTCHOUC	
205	015101 19800	PIED	
207	945328 00000	VIS HEXAGONALE INTERNE	

¹⁾ quantité nécessaire / entretien (F / DSF / VSF)

INDEX	Pos.	No. Identification	Designation
	301	007401 19800	CARCASSE SILENCIEUX
	302	907600 80000	GRILLE POUR SILENCIEUX
	303	907704 20000	MOUSSE POUR SILENCIEUX
	400	733701 99609	SOUPAPE

¹⁾ quantité nécessaire / entretien (F / DSF / VSF)

INDICE	Pos.	No. Identificazione	Designazione
SV 7.380	U	570400 19800	SET DI TRASFORMAZIONE /1➡/2 (POS: 32, 104, 181, 183, 184, 185, 186, 187)
	10	741315 00000	AMMORTIZZATORE IN GOMMA
	11	515100 19800	PIEDE
	12	515101 19800	PIEDE
	21	018300 94000	DISCO
	22	001103 94001	COPERCHIO CUSCINETTO
	23	906611 10000	CUSCINETTO A SFERA
	27	000100 19800	CARCASSA
	28	001103 19801	COPERCHIO CUSCINETTO
	29	911308 00000	GUARNIZIONE
	30	948503 00000	ANELLO A MOLLA
	31	945308 00000	VITE ESAGONALE INTERNA
	32	951703 00000	DISCO A MOLLA
	33	945373 00000	VITE ESAGONALE INTERNA
	36	945313 00000	VITE ESAGONALE INTERNA
	41	013900 19800	BUSSOLA GUARNIRANTE
	42	911468 00000	DISCO GIUOCO 32X55X0,025
	43	911469 00000	DISCO GIUOCO 32X55X0,05
	44	911470 00000	DISCO GIUOCO 32X55X0,1
	45	911471 00000	DISCO GIUOCO 32X55X0,2
	48	947742 00000	CHIAVETTA
	49	000600 19800	GIRANTE
	50	001900 24000	RONDELLA DI SICUREZZA
	51	001800 24000	VITE
	63	000200 19800	COPERCHIO
	68	945225 00000	VITE ESAGONALE
	101	007400 19900	CARCASSA SILEZIATORE
102.1	007600 94000	TUBO-CRIVELLO (SV 7.380/1-01)	
102.2	007601 94000	TUBO-CRIVELLO (SV 7.380/2-501)	
103	907704 10000	MATERIALE PER SILENZIATORE	
104	907500 19800	GUARNIZIONE	
105	007805 19800	FLANGIA	
106	903808 01000	VITE	
107	903809 01000	VITE	
109	945226 00000	VITE ESAGONALE	
113	040100 19800	CARCASSA DEL FILTRO	
114	945321 00000	VITE ESAGONALE INTERNA	
116	903807 01000	VITE	
118	945372 00000	VITE ESAGONALE INTERNA	
121	951038 00000	VITE PRIGIONIERA	
125	909548 00000	CARTUCCIA FILTRO (1x)¹⁾	
127	040202 19800	COPERCHIO FILTRO	
131	921503 00000	MANOPOLA A CROCIERA	
136	040203 19800	COPERCHIO FILTRO	
137	945383 00000	VITE ESAGONALE INTERNA	
139	016600 19800	PEZZO DI RACORDO	
181	015500 19800	GIUNTO DI RIDUZIONE	
183	005601 19800	COPERCHIO	
184	907502 19800	GUARNIZIONE	
185	005600 19800	COPERCHIO	
186	945222 00000	VITE ESAGONALE	
187	945155 00000	VITE ESAGONALE	
201	015102 19800	PIEDE	
202	945224 00000	VITE ESAGONALE	
203	949451 00000	RONDELLA	
204	951906 00000	PROTEZIONE IN GOMMA	
205	015101 19800	PIEDE	
207	945328 00000	VITE ESAGONALE INTERNA	

¹⁾ quantità di ordinazione necessari / manutenzione (F / DSF / VSF)

INDICE	Pos.	No. Identificazione	Designazione
	301	007401 19800	CARCASSA SILENZIATORE
	302	907600 80000	GRIGLIA PER SILENZIATORE
	303	907704 20000	MATERIALE PER SILENZIATORE
	400	733701 99609	VALVOLA








¹⁾ quantità di ordinazione necessari / manutenzione (F / DSF / VSF)

ÍNDICE	Pos.	No. de pedido	Descripción
SV 7.380	U	570400 19800	EQUIPO PARA LA CONVERSIÓN /1➔/2 (POS: 32, 104, 181, 183, 184, 185, 186, 187)
	10	741315 00000	AMORTIGUADOR DE GOMA
	11	515100 19800	PIE COMPLETO
	12	515101 19800	PIE COMPLETO, LATERAL
	21	018300 94000	DISCO DE PROTECCIÓN
	22	001103 94001	TAPA DE COJINETE
	23	906611 10000	COJINETE DE RODAMIENTO
	27	000100 19800	CARCASA
	28	001103 19801	TAPA DE COJINETE
	29	911308 00000	MANGUERA DE JUNTA
	30	948503 00000	ARANDELA DE MUELLE
	31	945308 00000	TORNILLO HEXAGONAL INTERIOR
	32	951703 00000	ARANDELA ELÁSTICA
	33	945373 00000	TORNILLO HEXAGONAL INTERIOR
	36	945313 00000	TORNILLO HEXAGONAL INTERIOR
	41	013900 19800	CASQUILLO DE JUNTA
	42	911468 00000	ARANDELA DISTANCIADORA 32X55X0,025
	43	911469 00000	ARANDELA DISTANCIADORA 32X55X0,050
	44	911470 00000	ARANDELA DISTANCIADORA 32X55X0,100
	45	911471 00000	ARANDELA DISTANCIADORA 32X55X0,200
	48	947742 00000	LENGÜETA DE AJUSTE
	49	000600 19800	RUEDA CORREDERA
	50	001900 24000	CHAPA DE ASEGURAMIENTO
	51	001800 24000	TORNILLO TERMINAL DE ÁRBOL
	63	000200 19800	TAPA DE CARCASA
	68	945225 00000	TORNILLO DE CABEZA HEXAGONAL
	101	007400 19900	CARCASA DE SILENCIADOR
	102.1	007600 94000	TUBO DE CRIBA (SV 7.380/1-01)
	102.2	007601 94000	TUBO DE CRIBA (SV 7.380/2-501)
	103	907704 10000	AMORTIGUADOR
	104	907500 19800	JUNTA
	105	007805 19800	BRIDA ROSCADA
	106	903808 01000	TORNILLO TIRANTE
	107	903809 01000	TORNILLO TIRANTE
	109	945226 00000	TORNILLO DE CABEZA HEXAGONAL
	113	040100 19800	CARCASA DE FILTRO
	114	945321 00000	TORNILLO HEXAGONAL INTERIOR
	116	903807 01000	TORNILLO TIRANTE
	118	945372 00000	TORNILLO HEXAGONAL INTERIOR
	121	951038 00000	ESPÁRRAGO
	125	909548 00000	CARTUCHO DE FILTRO (1x) ¹⁾
	127	040202 19800	TAPA DE FILTRO
	131	921503 00000	EMPUÑADURA DE ESTRELLA
	136	040203 19800	TAPA DE FILTRO
	137	945383 00000	TORNILLO HEXAGONAL INTERIOR
	139	016600 19800	PIEZA DE EMPALME
	181	015500 19800	PIEZA DE REDUCCIÓN
	183	005601 19800	TAPA
	184	907502 19800	JUNTA
	185	005600 19800	TAPA
	186	945222 00000	TORNILLO DE CABEZA HEXAGONAL
	187	945155 00000	TORNILLO DE CABEZA HEXAGONAL
	201	015102 19800	PIE
	202	945224 00000	TORNILLO DE CABEZA HEXAGONAL
	203	949451 00000	ARANDELA
	204	951906 00000	BOQUILLA DE CABLE
	205	015101 19800	PIE
	207	945328 00000	TORNILLO HEXAGONAL INTERIOR

¹⁾ cantidad necesario / mantenimiento (F / DSF / VSF)

ÍNDICE	Pos.	No. de pedido	Descripción
	301	007401 19800	CARCASA DE SILENCIADOR
	302	907600 80000	TUBO DE CRIBA
	303	907704 20000	AMORTIGUADOR
	400	733701 99609	VÁLVULA

¹⁾ cantidad necesario / mantenimiento (F / DSF / VSF)

SV 7.380/-XX	Variante 	Pos. ²⁾	Bestell Nr. / Ident No. / No. Identification / No. Identificazione / No. De pedido		Beschreibung / Description / Designation / Designazione / Desripcion
			  	  	
① /2-501 Sonderausführung Special design Fabrication spéciale Modello speciale Versión especial		27	000102 19800	000100 19800	GEHÄUSE / PUMP BODY / CORP DE POMPE / CARCASSA / CARCASA
		63	000203 19900	000200 19900	GEHÄUSEDECKEL / HOUSING LID / COUVERCLE / COPERCHIO / TAPA DE CARCASA

²⁾ variantenabhängige Bauteile / variant-dependent components / composants variante-dependantes / componenti variante-dispendenti / componentes variante-dependientes