

VASF 1.120/1-3110
VASF 1.120/2-3110

SERVICE

BECKER
D-42279 Wuppertal
www.becker-international.com

year XXXX

No. (-) XXXX-XXXX-XXXX

type VASF 1.120/1-XX

frequency	XXXX	Hz
speed	XXXX	min ⁻¹
power required	XXXX	kW
inlet capacity	XXXX	m ³ /h
pressure +	XXXX	mbar
vacuum -	XXXX	mbar

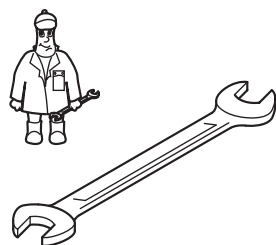
Made in Germany

Index
Variante

Ersatzteilliste
Spare parts list
Liste de pièces de rechange
Listino pezzi di ricambio
Lista de peças sobresselentes
Reserveonderdelenlijst
Atsarginių dalių sąrašas
Varuosad nimekirja
Rezerves daļu saraksts

Reservdelists
Reservdelslista
Varaosuettelo
Reservdelists
Wykaz części zamiennych
Tartalékalkatrész lista
Seznam náhradních dílů
Seznam nadomestnih delov
Zoznam náhradných dielov
Rezervni dijelovi popis

Lista pieselor de schimb
Páirteanna spártha liosta
Κατάλογος ανταλλακτικών
Yedek parça listesi
Списък на резервните части
Перечень запасных частей
スペアパーツリスト
예비 부품 목록
备用零件目录

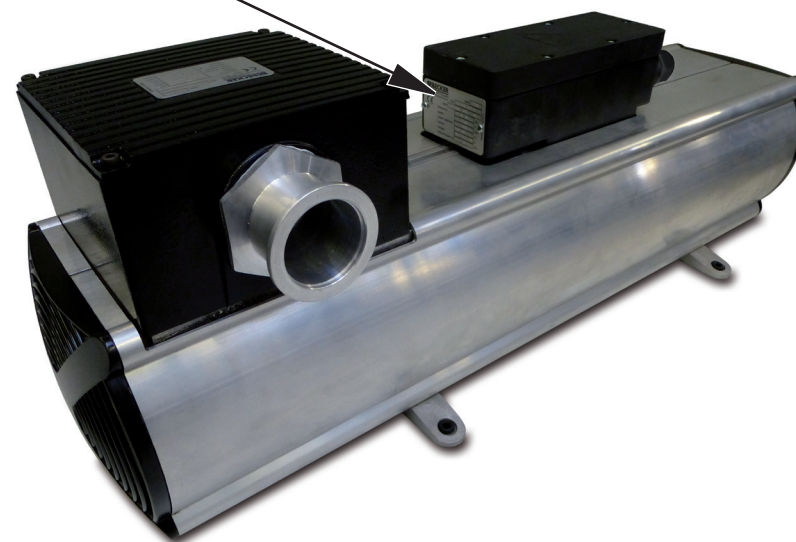


Wartung
Maintenance
Entretien
Manutenzione
Mantenimiento

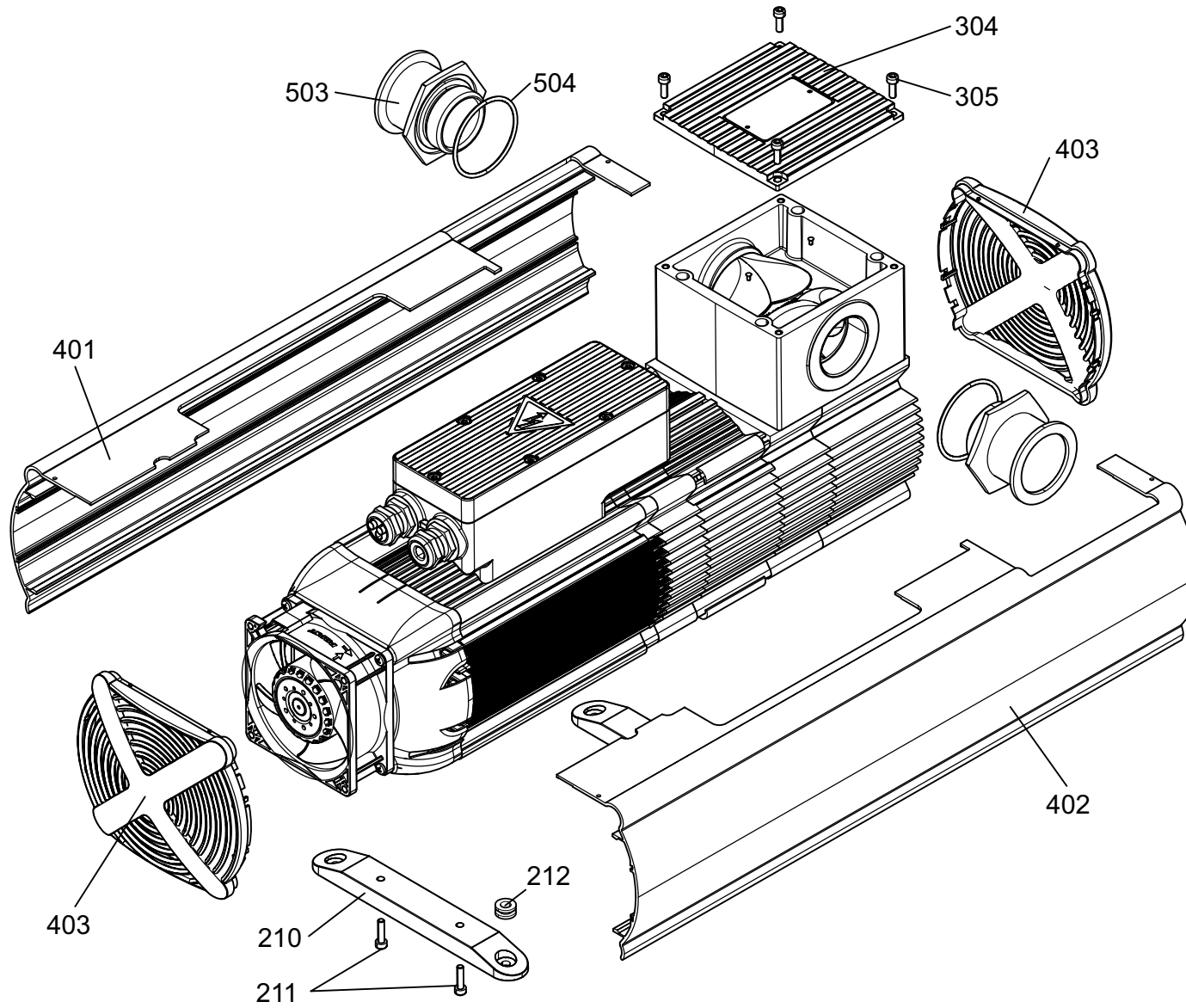


www.becker-international.com

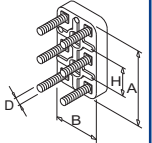
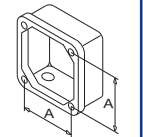
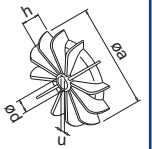
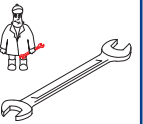
Sales and service network





VASF 1.120/1-3110
VASF 1.120/2-3110





SERVICE ?




INDEX	Pos.	Bestell Nr.	Beschreibung	
VASF 1.120/X -3110	210	015100 42800	FUSS	
	211	945301 00000	INNENSECHSKANTSCHRAUBE, DIN912 M4X16	
	212	951930 00000	GUMMIFORMTEIL	
	304	005601 42800	DECKEL	
	305	945311 10000	INNENSECHSKANTSCHRAUBE, DIN4762 M4X12	
	401	006802 42800	GERÄTEHAUBE	
	402	006803 42800	GERÄTEHAUBE	
	403	002500 42800	ABDECKHAUBE	
	503	903614 00000	KLEINFLANSCH - OPTIONAL	
	504	913121 50100	O-RING, 50X2,5 - OPTIONAL	

INDEX	Pos.	Ident No.	Description	
VASF 1.120/X -3110	210	015100 42800	FOOT	
	211	945301 00000	SOCKET HEAD SCREW, DIN912 M4X16	
	212	951930 00000	BUMPER	
	304	005601 42800	LID	
	305	945311 10000	SOCKET HEAD SCREW, DIN4762 M4X12	
	401	006802 42800	PROTECTING HOOD	
	402	006803 42800	PROTECTING HOOD	
	403	002500 42800	COVERING CAP	
	503	903614 00000	SMALL FLANGE - OPTIONAL	
	504	913121 50100	O-RING, 50X2,5 - OPTIONAL	

INDEX	Pos.	No. identification	Designation	
VASF 1.120/X -3110	210	015100 42800	PIED	
	211	945301 00000	VIS HEXAGONALE INTERNE, DIN912 M4X16	
	212	951930 00000	AMORTISSEUR CAOU TCHOUC	
	304	005601 42800	COUVERCLE	
	305	945311 10000	VIS HEXAGONALE INTERNE, DIN4762 M4X12	
	401	006802 42800	CARTER PROTECTEUR	
	402	006803 42800	CARTER PROTECTEUR	
	403	002500 42800	CAPOT DE PROTECTION	
	503	903614 00000	PETITE BRIDE - EN OPTION	
	504	913121 50100	ANNEAU-O, 50X2,5 - EN OPTION	

INDEX	Pos.	No. identificazione	Designazione	
VASF 1.120/X -3110	210	015100 42800	PIE	
	211	945301 00000	VITE ESAGONALE INTERNA, DIN912 M4X16	
	212	951930 00000	PINGENTE DI GOMMA	
	304	005601 42800	COPERCHIO	
	305	945311 10000	VITE ESAGONALE INTERNA, DIN4762 M4X12	
	401	006802 42800	CARTER DI PROTEZIONE	
	402	006803 42800	CARTER DI PROTEZIONE	
	403	002500 42800	COPERCHIO	
	503	903614 00000	PICCOLA FLANGIA - OPTIONALE	
	504	913121 50100	ANELLO-O, 50X2,5 - OPTIONALE	

INDICE	Pos.	No. de pedido	Descripción	
VASF 1.120/X -3110	210	015100 42800	PIE	
	211	945301 00000	TORNILLO HEXAGONAL INTERIOR, DIN912 M4X16	
	212	951930 00000	BOQUILLA DE CABLE	
	304	005601 42800	TAPA	
	305	945311 10000	TORNILLO HEXAGONAL INTERIOR, DIN4762 M4X12	
	401	006802 42800	CAPERUZA DE APARATO	
	402	006803 42800	CAPERUZA DE APARATO	
	403	002500 42800	TAPA	
	503	903614 00000	BRIDA PEQUEÑA - OPCIONAL	
	504	913121 50100	JUNTA TÓRICA, 50X2,5 - OPCIONAL	