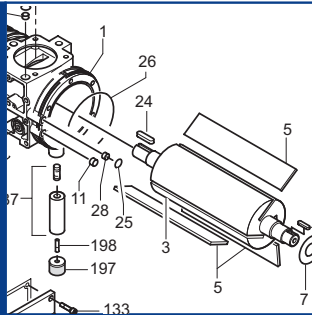


U 4.190



SERVICE

BECKER
D-42279 Wuppertal
www.becker-international.com

year

No.

type **Index Variante**

frequency Hz

speed min⁻¹

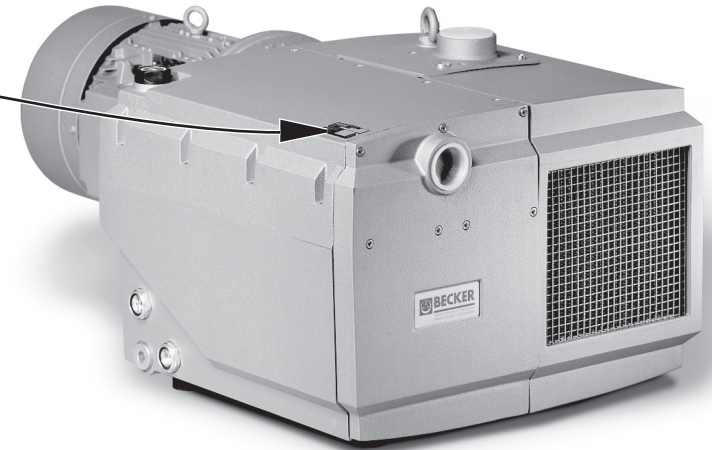
power required kW

inlet capacity m³/h

pressure + mbar

vacuum - mbar

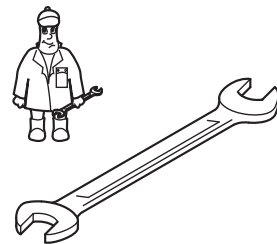
Made in Germany



Ersatzteilliste
Spare parts list
Liste de pièces de rechange
Listino pezzi di ricambio
Lista de piezas de recambio
Lista de peças sobresselentes
Reserveonderdelenlijst
Atsarginių dalių sąrašas
Varuosad nimekirja
Rezerves daļu saraksts

Reservedelsliste
Reservdelslista
Varaosaluettelo
Reservedelsliste
Wykaz części zamiennych
Tartalékalkatrész lista
Seznam náhradních dílů
Seznam nadomestnih delov
Zoznam náhradných dielov
Rezervni dijelovi popis

Lista pieselor de schimb
Páirteanna spártha liosta
Κατάλογος ανταλλακτικών
Yedek parça listesi
Списък на резервните части
Перечень запасных частей
スペアパーツリスト
예비 부품 목록
备用零件目录



Pos.	Menge ²⁾ Quantity Quantité Quantità Cantidad	Bestell-Nr. Ident No. No. Identification No. Identificazione No. de pedido	Bezeichnung Description Designation Designazione Descripción
□	1	549000 26400	Dichtungssatz, Complete set of seals, Jeu de joints, Kit di guarnizioni, Junta Completa
5	SATZ/KIT	900506 00003	Schieber, Rotor Vane, Palette, Empujador
83	2	965415 00000	Luftentölelement, Oil separating element, Element separation huile, Cartuccia sepa-ratore olio, Elemento de desaceitar de aire

²⁾ erforderliche Bestellmenge / necessary order quantity / quantité nécessaire / quantità di ordinazione necessari / cantidad necesario

Wartung
Maintenance
Entretien
Manutenzione
Mantenimiento



U 4.190

Standard



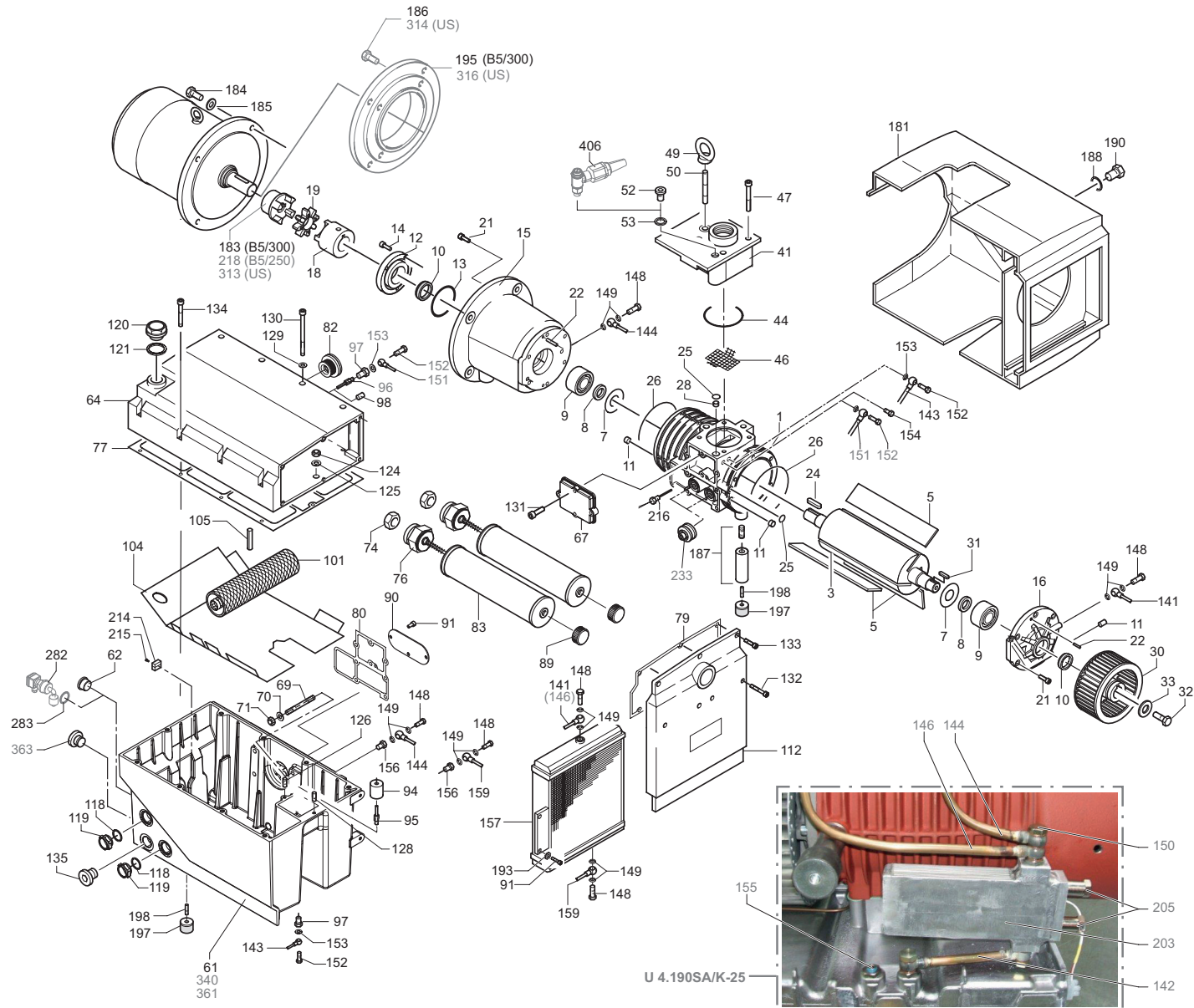
Variante



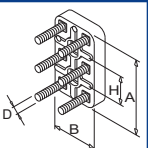
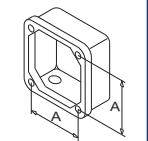
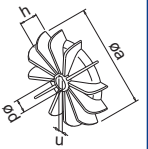
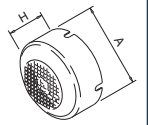
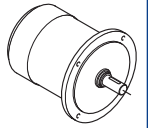
U 4.190/XX

① ②


U 4.190 SA/K-25 + F/K-25






SERVICE ?



INDEX	Pos.	Bestell Nr.	Beschreibung	DE
U 4.190	□	549000 26400	DICHTUNGSSATZ ¹⁾	
	1	000102 26400	GEHÄUSE	
	3	020000 26400	KOLBEN	
	5	900506 00003	SCHIEBER, KUNSTSTOFF (SATZ) ²⁾	
	7	917611 00000	LAGERDICHTRING	
	8	911472 00000	DISTANZSCHEIBE	
	9	906662 00000	WÄLZLAGER 6207 DIN 625	
	10	906507 00000	WELLENDICHTRING	
	11	912820 00000	VERSCHLUSSDECKEL	
	12	001101 26400	LAGERDECKEL	
	14	945319 00000	INNENSECHSKANTSCHRAUBE	
	15	000800 26400	SEITENDECKEL MIT LATERNE	
	16	000702 26400	SEITENDECKEL	
	18	902108 00000	KUPPLUNGSHÄLFTE	
	19	902210 00000	KUPPLUNGSSCHEIBE	
	21	945331 00000	INNENSECHSKANTSCHRAUBE	
	22	948742 00000	PASSKERBSTIFT	
	24	947733 00000	PASSFEDER	
	30	502301 26400	VENTILATOR MIT NABE	
	31	947732 00000	PASSFEDER	
	32	945270 00000	WELLENENDSCHRAUBE	
	33	949409 00000	UNTERLEGSCHLEIFE	
	41	537502 26400	RÜCKSCHLAGVENTIL, KOMPL.	
	46	008002 26400	SIEB	
	47	945371 00000	INNENSECHSKANTSCHRAUBE	
	49	951602 00000	RINGMUTTER	
	50	946969 00000	STIFTSCHRAUBE	
	52	951228 02000	VERSCHLUSSSCHRAUBE	
	61	002410 26400	ABSCHIEDERGEHÄUSE	
	62	951221 00100	VERSCHLUSS-SCHRAUBE	
	64	001703 26400	ÖLBEHÄLTER-DECKEL	
	67	003705 26400	DECKEL	
	69	946968 00000	STIFTSCHRAUBE	
	70	917107 00000	TELLERFEDER	
	71	947105 00000	SECHSKANTMUTTER	
	74	305800 02000	ÜBERWURFMUTTER	
	76	727505 99628	ABBLASEVENTIL	
	82	537502 26200	VENTIL, KOMPL.	
	83	965415 00000	LUFTENTÖLELEMENT (2x) ²⁾	
	89	921500 50000	HANDGRIFF	
	90	013301 26400	PRALLBLECH	
	91	945318 00000	INNENSECHSKANTSCHRAUBE	
	94	867800 99559	SCHWIMMER	
	95	003300 10700	DÜSE	
	97	912300 00000	ANSCHLUSS-SCHRAUBE	
	98	912871 00000	VERSCHLUSSSCHRAUBE	
	101	506000 26400	GROBABSCHIEDER, KOMPLETT	
	104	008003 26400	SIEB	
	105	952014 00000	SPANNHÜLSE	
	112	003703 26400	DECKEL	
	119	907309 00000	ÖLSCHAUGLAS	
	120	916800 10000	SCHRAUBDECKEL	
	124	947104 00000	SECHSKANTMUTTER	
	125	948504 00000	FEDERRING	
	126	951001 02000	STIFTSCHRAUBE	
	128	951003 02000	STIFTSCHRAUBE	
	130	945383 00000	INNENSECHSKANTSCHRAUBE	
	131	945230 00000	SECHSKANTSCHRAUBE	
	132	945363 00000	INNENSECHSKANTSCHRAUBE	


INDEX	Pos.	Bestell Nr.	Beschreibung	DE
	133	945321 00000	INNENSECHSKANTSCHRAUBE	
	134	945324 00000	INNENSECHSKANTSCHRAUBE	
	135	951220 00100	VERSCHLUSS-SCHRAUBE	
	141	012223 26400	LEITUNG	
	143	012221 26400	ÖLRÜCKFÜHRLEITUNG	
	144	012224 26400	LEITUNG	
	148	948402 00000	HOHLSCHRAUBE	
	152	009400 19000	KUGELSTÜCKSCHRAUBE	
	154	012900 19000	VERSCHLUSS-SCHRAUBE	
	156	912306 00000	ANSCHLUSS-SCHRAUBE	
	157	960201 26400	KÜHLER	
	159	012222 26400	LEITUNG	
	181	018301 26400	HAUBE	
	183	902100 21900	MOTORKUPPLUNG, Ø38MM (B5/300)	
	184	945237 00000	SECHSKANTSCHRAUBE	
	185	947506 00000	UNTERLEGSCHLEIFE	
	186	945349 00000	INNENSECHSKANTSCHRAUBE (B5/300)	
	187	568100 26400	STÜTZE	
	188	949408 00000	U-SCHLEIFE	
	190	945227 00000	WELLENABSCHLUSS-SCHRAUBE	
	193	949203 00000	ZAHNSCHLEIFE	
	195	037900 26400	ZWISCHENFLANSCH (B5/300)	
	197	741302 00000	GUMMIPUFFER	
	198	945634 00000	GEWINDESTIFT	
	214	950700 10000	LÜSTERKLEMME	
	215	946304 00000	INNENSECHSKANTSCHRAUBE	
	216	943400 90000	TEMPERATURFÜHLER	
	218	902108 00000	MOTORKUPPLUNG, Ø28MM (B5/250)	
	282	741103 99682	NIVEAUGEGER - OPTIONAL	
	313	902100 21300	MOTORKUPPLUNG (US)	
	314	945236 00000	SECHSKANTSCHRAUBE (US)	
	316	037900 12900	ZWISCHENFLANSCH (US)	
	406	768705 99626	GASBALLASTVENTIL - OPTIONAL	
		960009 00200	BECKER LUBE M 100 (MINERALÖL) - 5L	
		960016 00200	BECKER LUBE S 100 (SYNTHETIKÖL) - 5L	
		960023 00200	BECKER LUBE SL 100 (LEBENSMITTELBEREICH) - 5L	
¹⁾ Dichtungssatz - 549000 26400 - Pos.: 13, 25, 26, 44, 53, 63, 77, 79, 80, 118, 121, 129, 136, 149, 153, 283 ²⁾ erforderliche Bestellmenge / Wartung				

INDEX	Pos.	Ident No.	Description	
U 4.190	□	549000 26400	SET OF SEALS ¹⁾	
	1	000102 26400	PUMP BODY	
	3	020000 26400	ROTOR	
	5	900506 00003	ROTOR VANE IN PLASTIC (KIT) ²⁾	
	7	917611 00000	BEARING SEALING WASHER	
	8	911472 00000	DISTANCE DISC	
	9	906662 00000	BEARING 6207 DIN 625	
	10	906507 00000	SHAFT SEALING RING	
	11	912820 00000	CAP	
	12	001101 26400	BEARING COVER	
	14	945319 00000	SOCKET HEAD SCREW	
	15	000800 26400	LID WITH FLANGE	
	16	000702 26400	LID	
	18	902108 00000	COUPLING	
	19	902210 00000	COUPLING DISC	
	21	945331 00000	SOCKET HEAD SCREW	
	22	948742 00000	STRAIGHT PIN	
	24	947733 00000	KEY	
	30	502301 26400	FAN	
	31	947732 00000	KEY	
	32	945270 00000	SHAFT END BOLD	
	33	949409 00000	WASHER	
	41	537502 26400	NON RETURN VALVE, ENTIRE	
	46	008002 26400	SIEVE	
	47	945371 00000	SOCKET HEAD SCREW	
	49	951602 00000	RING UNIT	
	50	946969 00000	STUD	
	52	951228 02000	LOCKING SCREW	
	61	002410 26400	HOUSING FOR OIL SEPARATION	
	62	951221 00100	LOCKING SCREW	
	64	001703 26400	OIL TANK COVER	
	67	003705 26400	COVER	
	69	946968 00000	STUD	
	70	917107 00000	SPRING COLLAR	
	71	947105 00000	HEX.NUT	
	74	305800 02000	COUPLING NUT	
	76	727505 99628	BLOW OFF VALVE	
	82	537502 26200	VALVE, ENTIRE	
	83	965415 00000	OIL SEPARATION ELEMENT (2x) ²⁾	
	89	921500 50000	HANDLE	
	90	013301 26400	METAL FILTER	
	91	945318 00000	SOCKET HEAD SCREW	
	94	867800 99559	FLOAT	
	95	003300 10700	NOZZLE	
	97	912300 00000	CONNECTING SCREW	
	98	912871 00000	LOCKING SCREW	
	101	506000 26400	COARSE SEPARATOR	
	104	008003 26400	SIEVE	
	105	952014 00000	FIXING SLEEVE	
	112	003703 26400	COVER	
	119	907309 00000	OIL SIGHT GLASS	
	120	916800 10000	COVER	
	124	947104 00000	HEX.NUT	
	125	948504 00000	SPRING WASHER	
	126	951001 02000	STUD	
	128	951003 02000	STUD	
	130	945383 00000	SOCKET HEAD SCREW	
	131	945230 00000	HEX-HEAD SCREW	
	132	945363 00000	SOCKET HEAD SCREW	


INDEX	Pos.	Ident No.	Description	
	133	945321 00000	SOCKET HEAD SCREW	
	134	945324 00000	SOCKET HEAD SCREW	
	135	951220 00100	LOCKING SCREW	
	141	012223 26400	PIPE	
	143	012221 26400	OIL RETURN PIPE	
	144	012224 26400	PIPE	
	148	948402 00000	HOLLOW SCREW	
	152	009400 19000	HOLLOW HOLDING SCREW	
	154	012900 19000	LOCKING SCREW	
	156	912306 00000	CONNECTING SCREW	
	157	960201 26400	COOLER	
	159	012222 26400	PIPE	
	181	018301 26400	PROTECTING HOOD	
	183	902100 21900	COUPLING MOTOR SIDE, Ø38MM (B5/300)	
	184	945237 00000	HEX-HEAD SCREW	
	185	947506 00000	WASHER	
	186	945349 00000	SOCKET HEAD SCREW (B5/300)	
	187	568100 26400	SUPPORT PILLAR	
	188	949408 00000	WASHER	
	190	945227 00000	SCREW	
	193	949203 00000	TOOTHED SPRING WASHER	
	195	037900 26400	INTERMEDIATE FLANGE (B5/300)	
	197	741302 00000	RUBBER BUFFER	
	198	945634 00000	THREADED PIN	
	214	950700 10000	LUSTER TERMINAL	
	215	946304 00000	SOCKET HEAD SCREW	
	216	943400 90000	TEMPERATURE PROBE	
	218	902108 00000	COUPLING MOTOR SIDE, Ø28MM (B5/250)	
	282	741103 99682	OIL LEVEL CONTROL - OPTIONAL	
	313	902100 21300	COUPLING MOTOR SIDE (US)	
	314	945236 00000	HEX-HEAD SCREW (US)	
	316	037900 12900	INTERMEDIATE FLANGE (US)	
	406	768705 99626	GAS BALLAST VALVE - OPTIONAL	
		960009 00200	BECKER LUBE M 100 (MINERAL OIL) - 5L	
		960016 00200	BECKER LUBE S 100 (SYNTHETIC OIL) - 5L	
		960023 00200	BECKER LUBE SL 100 (FOOD SECTOR) - 5L	

¹⁾ Set of seals - 549000 26400 - Pos.: 13, 25, 26, 44, 53, 63, 77, 79, 80, 118, 121, 129, 136, 149, 153, 283
²⁾ necessary order quantity / maintenance

INDICE	Pos.	No. Identification	Designation	FR	
U 4.190	■	549000 26400	JEU DE JOINTS ¹⁾		
	1	000102 26400	CORP DE POMPE		
	3	020000 26400	PISTON		
	5	900506 00003	PALETTE ON PLASTIQUE (KIT) ²⁾		
	7	917611 00000	RONDELLE D'ETANCHEITE DU ROULEMENT		
	8	911472 00000	DISQUE AJUSTAGE		
	9	906662 00000	ROULEMENT 6207 DIN 625		
	10	906507 00000	BAGUE D'ETANCHEITE P.L'AXE		
	11	912820 00000	COUVERCLE		
	12	001101 26400	COUVERCLE DE ROULEMENT		
	14	945319 00000	VIS HEXAGONALE INTERNE		
	15	000800 26400	COUVERCLE AVEC BRIDE		
	16	000702 26400	COUVERCLE		
	18	902108 00000	ACCOUPEMENT		
	19	902210 00000	DISQUE D'ACCOUPEMENT		
	21	945331 00000	VIS HEXAGONALE INTERNE		
	22	948742 00000	GOUPILLE CYLINDRIQUE		
	24	947733 00000	CLAVETTE		
	30	502301 26400	VENTILATEUR		
	31	947732 00000	CLAVETTE		
	32	945270 00000	VIS BOUT D'ARBRE		
	33	949409 00000	RONDELLE		
	41	537502 26400	SOUPAPE ANTI-RETOUR, ENTIER		
	46	008002 26400	FILTRE		
	47	945371 00000	VIS HEXAGONALE INTERNE		
	49	951602 00000	ECROU A ANNEAU		
	50	946969 00000	PRISONNIER		
	52	951228 02000	BOUCHON		
	61	002410 26400	CORP DE SEPARATEUR D'HUILE		
	62	951221 00100	BOUCHON		
	64	001703 26400	COUVERCLE RESERVOIR D'HUILE		
	67	003705 26400	COUVERCLE		
	69	946968 00000	PRISONNIER		
	70	917107 00000	RONDELLE À RESSORT		
	71	947105 00000	ECROU A 6 PANS		
	74	305800 02000	ECROU		
	76	727505 99628	SILENCIEUX		
	82	537502 26200	SOUPAPE, ENTIER		
	83	965415 00000	ELEMENT SEPARATION HUILE (2x) ²⁾		
	89	921500 50000	POIGNEE		
	90	013301 26400	FILTRE METALIQUE		
	91	945318 00000	VIS HEXAGONALE INTERNE		
	94	867800 99559	PIED CAOUTCHOVE		
	95	003300 10700	GICLEUR		
	97	912300 00000	VIS DE RACCORD		
	98	912871 00000	BOUCHON		
	101	506000 26400	SEPARATEUR A GROS		
	104	008003 26400	FILTRE		
	105	952014 00000	MANCHON DE FIXATION		
	112	003703 26400	COUVERCLE		
	119	907309 00000	VERRE REGARD		
	120	916800 10000	COUVERCLE		
	124	947104 00000	ECROU A 6PANS		
	125	948504 00000	ANNEAU-RESSORT		
	126	951001 02000	PRISONNIER		
	128	951003 02000	PRISONNIER		
	130	945383 00000	VIS HEXAGONALE INTERNE		
	131	945230 00000	VIS HEXAGONALE		
	132	945363 00000	VIS HEXAGONALE INTERNE		

INDICE	Pos.	No. Identification	Designation	FR	
	133	945321 00000	VIS HEXAGONALE INTERNE		
	134	945324 00000	VIS HEXAGONALE INTERNE		
	135	951220 00100	BOUCHON		
	141	012223 26400	TUYAU		
	143	012221 26400	TUYAU D'HUILE		
	144	012224 26400	TUYAU		
	148	948402 00000	VIS CREUSE		
	152	009400 19000	VIS CREUSE DE FIXATION		
	154	012900 19000	BUCHON		
	156	912306 00000	VIS DE RACCORD		
	157	960201 26400	REFROIDISSEUR		
	159	012222 26400	TUYAU		
	181	018301 26400	CARTER PROTECTEUR		
	183	902100 21900	ACCOUPEMENT MOTEUR, Ø38MM (B5/300)		
	184	945237 00000	VIS HEXAGONALE		
	185	947506 00000	RONDELLE		
	186	945349 00000	VIS HEXAGONALE INTERNE (B5/300)		
	187	568100 26400	SUPPORT INTERMEDIAIRE		
	188	949408 00000	RONDELLE		
	190	945227 00000	VIS		
	193	949203 00000	DENT DISQUE		
	195	037900 26400	BRIDE INTERMEDIAIRE (B5/300)		
	197	741302 00000	AMORTISSEUR EN CAOUTCHOUC		
	198	945634 00000	GOUPILLE FILETEE		
	214	950700 10000	SERRE-FILS		
	215	946304 00000	VIS HEXAGONALE INTERNE		
	216	943400 90000	PALPEUR DE TEMPERATURE		
	218	902108 00000	ACCOUPEMENT MOTEUR, Ø28MM (B5/250)		
	282	741103 99682	INDICATEUR DE NIVEAU - EN OPTION		
	313	902100 21300	ACCOUPEMENT MOTEUR (US)		
	314	945236 00000	VIS HEXAGONALE (US)		
	316	037900 12900	BRIDE INTERMEDIAIRE (US)		
	406	768705 99626	L'ESTE D'AIR - EN OPTION		
		960009 00200	BECKER LUBE M 100 (HUILE MINÉRALE) - 5L		
		960016 00200	BECKER LUBE S 100 (L'HUILE SYNTHÉTIQUE) - 5L		
		960023 00200	BECKER LUBE SL 100 (SECTEUR DE L'ALIMENTATION) - 5L		
¹⁾ Jeu de joints - 549000 26400 - Pos.: 13, 25, 26, 44, 53, 63, 77, 79, 80, 118, 121, 129, 136, 149, 153, 283 ²⁾ quantité nécessaire / entretien					

INDICE	Pos.	No. Identificazione	Designazione	IT	
U 4.190	□	549000 26400	SERIE DI GUARNIZIONE ¹⁾		
	1	000102 26400	CARCASSA		
	3	020000 26400	ROTORE		
	5	900506 00003	PALETTE IN PLASTICA (KIT) ²⁾		
	7	917611 00000	ANELLO DI TENUTA DEL CUSCINETTO		
	8	911472 00000	DISCO DISTANZA		
	9	906662 00000	CUSCINETTO 6207 DIN 625		
	10	906507 00000	GUARNIZIONE PER L'ALBERO		
	11	912820 00000	COPERCHIO		
	12	001101 26400	COPERCHIO CUSCINETTO		
	14	945319 00000	VITE ESAGONALE INTERNA		
	15	000800 26400	COPERCHIO CON FLANGIA		
	16	000702 26400	COPERCHIO		
	18	902108 00000	GIUNTO		
	19	902210 00000	DISCO GIUNTO		
	21	945331 00000	VITE ESAGONALE INTERNA		
	22	948742 00000	PERNO		
	24	947733 00000	CHIAVETTA		
	30	502301 26400	VENTILATORE		
	31	947732 00000	CHIAVETTA		
	32	945270 00000	VITE DI CHIUSURA ALBERO		
	33	949409 00000	RONDELLA		
	41	537502 26400	VALVOLA NON RITORNO, INTERO		
	46	008002 26400	FILTRO		
	47	945371 00000	VITE ESAGONALE INTERNA		
	49	951602 00000	GOLFARE CON FORO FILETTATO		
	50	946969 00000	L'ASTA A VITE		
	52	951228 02000	VITE DI CHIUSURA		
	61	002410 26400	CARCASSA SEPARATORE OLIO		
	62	951221 00100	VITE DI CHIUSURA		
	64	001703 26400	COPERCHIO SERBATOIO OLIO		
	67	003705 26400	COPERCHIO		
	69	946968 00000	L'ASTA A VITE		
	70	917107 00000	RONDELLA A MOLLA		
	71	947105 00000	DADO ESAGONALE		
	74	305800 02000	DADO DI RISVOLTO		
	76	727505 99628	SILENZIATORE		
	82	537502 26200	VALVOLA, INTERO		
	83	965415 00000	CARTUCCIA SEPARATORE OLIO (2x) ²⁾		
	89	921500 50000	MANETTA		
	90	013301 26400	FILTRO METALICO		
	91	945318 00000	VITE ESAGONALE INTERNA		
	94	867800 99559	GALLEGGIANTE		
	95	003300 10700	UGELLO		
	97	912300 00000	ATTACO FILETTATO		
	98	912871 00000	VITE DI CHIUSURA		
	101	506000 26400	SEPARATORE GROSSOLANO		
	104	008003 26400	FILTRO		
	105	952014 00000	MANICOTTO DI FISSAZIONE		
	112	003703 26400	COPERCHIO		
	119	907309 00000	SPIA LIVELLO OLIO		
	120	916800 10000	COPERCHIO		
	124	947104 00000	DADO ESAGONALE		
	125	948504 00000	ANELLO A MOLLA		
	126	951001 02000	L'ASTA A VITE		
	128	951003 02000	L'ASTA A VITE		
	130	945383 00000	VITE ESAGONALE INTERNA		
	131	945230 00000	VITE ESAGONALE		
	132	945363 00000	VITE ESAGONALE INTERNA		

INDICE	Pos.	No. Identificazione	Designazione	IT	
	133	945321 00000	VITE ESAGONALE INTERNA		
	134	945324 00000	VITE ESAGONALE INTERNA		
	135	951220 00100	VITE DI CHIUSURA		
	141	012223 26400	CONDOTTO		
	143	012221 26400	CONDOTTO OLIO		
	144	012224 26400	CONDOTTO		
	148	948402 00000	VITE ESAGONALE		
	152	009400 19000	VITE PASSAGGIO OLIO		
	154	012900 19000	VITE DI CHIUSURA		
	156	912306 00000	ATTACO FILETTATO		
	157	960201 26400	RAFFREDDATORE		
	159	012222 26400	CONDOTTO		
	181	018301 26400	CARTER DI PROTEZIONE		
	183	902100 21900	GIUNTO MOTORE, Ø38MM (B5/300)		
	184	945237 00000	VITE ESAGONALE		
	185	947506 00000	RONDELLA		
	186	945349 00000	VITE ESAGONALE INTERNA (B5/300)		
	187	568100 26400	SUPPORTO		
	188	949408 00000	RONDELLA		
	190	945227 00000	VITE		
	193	949203 00000	DISCO A DENTE		
	195	037900 26400	FLANGE INTERMEDIA (B5/300)		
	197	741302 00000	AMMORTIZZATORE IN GOMMA		
	198	945634 00000	SPINA FILETTATURA		
	214	950700 10000	SCATOLA DEI CONNETTORI		
	215	946304 00000	VITE ESAGONALE INTERNA		
	216	943400 90000	TASTATORE TEMPERATURE		
	218	902108 00000	GIUNTO MOTORE, Ø28MM (B5/250)		
	282	741103 99682	SONDA D'OLIO - OPTIONALE		
	313	902100 21300	GIUNTO MOTORE (US)		
	314	945236 00000	VITE ESAGONALE (US)		
	316	037900 12900	FLANGE INTERMEDIA (US)		
	406	768705 99626	VALVOLA DI ZAVORATRICE - OPTIONALE		
		960009 00200	BECKER LUBE M 100 (OLIO MINERALE) - 5L		
		960016 00200	BECKER LUBE S 100 (OLIO SINTETICO) - 5L		
		960023 00200	BECKER LUBE SL 100 (SETTORE ALIMENTARE) - 5L		








¹⁾ Serie di guarnizione - 549000 26400 - Pos.: 13, 25, 26, 44, 53, 63, 77, 79, 80, 118, 121, 129, 136, 149, 153, 283
²⁾ quantità di ordinazione necessari / manutenzione

INDICE	Pos.	No. De pedido	Descripción	ES	
				ES	
U 4.190	□	549000 26400	JUNTA COMPLETA ¹⁾		
	1	000102 26400	CARCASA		
	3	020000 26400	ÉMBOLO		
	5	900506 00003	EMPUJADOR DE PLÁSTICO (KIT) ²⁾		
	7	917611 00000	ANILLO DE COJINETE DE JUNTA		
	8	911472 00000	ARANDELA DISTANCIADORA		
	9	906662 00000	COJINETE DE RODAMIENTO 6207 DIN 625		
	10	906507 00000	ANILLO DE JUNTA DE ÁRBOL		
	11	912820 00000	TAPA DE CIERRE		
	12	001101 26400	TAPA DE COJINETE		
	14	945319 00000	TORNILLO HEXAGONAL INTERIOR		
	15	000800 26400	TAPA LATERAL CONFAROL		
	16	000702 26400	TAPA LATERAL		
	18	902108 00000	MITAD DE ACOPLAMIENTO		
	19	902210 00000	DISCO DE ACOPLAMIENTO		
	21	945331 00000	TORNILLO HEXAGONAL INTERIOR		
	22	948742 00000	PASADOR ENTALLADO DE AJUSTE		
	24	947733 00000	LENGÜETA DE AJUSTE		
	30	502301 26400	VENTILADOR CON CUBO		
	31	947732 00000	LENGÜETA DE AJUSTE		
	32	945270 00000	TORNILLO TERMINAL DE ÁRBOL		
	33	949409 00000	ARANDELA		
	41	537502 26400	VÁLVULA ANTIRRETORNO COMPLETA		
	46	008002 26400	CRIBA		
	47	945371 00000	TORNILLO HEXAGONAL INTERIOR		
	49	951602 00000	TUERCA DE CÁNCAMO		
	50	946969 00000	ESPÁRRAGO		
	52	951228 02000	TORNILLO DE CIERRE		
	61	002410 26400	CARCASA SEPARADORA		
	62	951221 00100	TORNILLO DE CIERRE		
	64	001703 26400	TAPA DE RECIPIENTE DE ACEITE		
	67	003705 26400	TAPA		
	69	946968 00000	ESPÁRRAGO		
	70	917107 00000	ARANDELA DE APOYO DEL RESORTE		
	71	947105 00000	TUERCA HEXAGONAL		
	74	305800 02000	SOBRETUERCA		
	76	727505 99628	VÁLVULA DE BARRIDO		
	82	537502 26200	VÁLVULA COMPLETA		
	83	965415 00000	ELEMENTO DE DESACEITAR DE AIRE (2x) ²⁾		
	89	921500 50000	EMPUÑADURA		
	90	013301 26400	CHAPA DE REBOTE		
	91	945318 00000	TORNILLO HEXAGONAL INTERIOR		
	94	867800 99559	FLOTADOR		
	95	003300 10700	TOBERA		
	97	912300 00000	TORNILLO DE EMPALME		
	98	912871 00000	TORNILLO DE CIERRE		
	101	506000 26400	SEPARADOR DE SÓLIDOS GRUESOS COMPLETO		
	104	008003 26400	CRIBA		
	105	952014 00000	MANGUITO DE FIJACIÓN		
	112	003703 26400	TAPA		
	119	907309 00000	CRISTAL MIRILLA DE ACEITE		
	120	916800 10000	TAPA ROSCADA		
	124	947104 00000	TUERCA HEXAGONAL		
	125	948504 00000	ARANDELA DE MUELLE		
	126	951001 02000	ESPÁRRAGO		
	128	951003 02000	ESPÁRRAGO		
	130	945383 00000	TORNILLO HEXAGONAL INTERIOR		
	131	945230 00000	TORNILLO HEXAGONAL		
	132	945363 00000	TORNILLO HEXAGONAL INTERIOR		

INDICE	Pos.	No. De pedido	Descripción	ES	
				ES	
	133	945321 00000	TORNILLO HEXAGONAL INTERIOR		
	134	945324 00000	TORNILLO HEXAGONAL INTERIOR		
	135	951220 00100	TORNILLO DE CIERRE		
	141	012223 26400	CONDUCTO		
	143	012221 26400	CONDUCTO DE RETROALIMENTACIÓN DE ACEITE		
	144	012224 26400	CONDUCTO		
	148	948402 00000	TORNILLO HUECO		
	152	009400 19000	TORNILLO DE PIEZA ESFÉRICA		
	154	012900 19000	TORNILLO DE CIERRE		
	156	912306 00000	TORNILLO DE EMPALME		
	157	960201 26400	REFRIGERADOR		
	159	012222 26400	CONDUCTO		
	181	018301 26400	SOMBRETERE		
	183	902100 21900	ACOPLAMIENTO DE MOTOR, Ø38MM (B5/300)		
	184	945237 00000	TORNILLO DE CABEZA HEXAGONAL		
	185	947506 00000	ARANDELA		
	186	945349 00000	TORNILLO HEXAGONAL INTERIOR (B5/300)		
	187	568100 26400	APOYO		
	188	949408 00000	ARANDELA		
	190	945227 00000	TORNILLO TERMINAL DE ÁRBOL		
	193	949203 00000	POLEA DENTADA		
	195	037900 26400	BRIDA INTERMEDIA (B5/300)		
	197	741302 00000	AMORTIGUADOR DE GOMA		
	198	945634 00000	VARILLA ROSCADA		
	214	950700 10000	CAJA DE CONEXIÓN		
	215	946304 00000	TORNILLO HEXAGONAL INTERIOR		
	216	943400 90000	SENSOR DE TEMPERATURA		
	218	902108 00000	ACOPLAMIENTO DE MOTOR, Ø28MM (B5/250)		
	282	741103 99682	GENERADOR DE NIVEL - OPCIONAL		
	313	902100 21300	ACOPLAMIENTO DE MOTOR (US)		
	314	945236 00000	TORNILLO DE CABEZA HEXAGONAL (US)		
	316	037900 12900	BRIDA INTERMEDIA (US)		
	406	768705 99626	VÁLVULA DE LASTRE DE GAS - OPCIONAL		
		960009 00200	BECKER LUBE M 100 (ACEITE MINERAL) - 5L		
		960016 00200	BECKER LUBE S 100 (ACEITE SINTÉTICO) - 5L		
		960023 00200	BECKER LUBE SL 100 (SECTOR ALIMENTARIO) - 5L		

¹⁾ Junta completa - 549000 26400 - Pos.: 13, 25, 26, 44, 53, 63, 77, 79, 80, 118, 121, 129, 136, 149, 153, 283

²⁾ cantidad necesario / mantenimiento

U 4.190	Variante 	Pos. ²⁾	Bestell Nr. / Ident No. / No. Identification / No. Identificazione / No. De pedido		Beschreibung / Description / Designation / Designazione / Desripcion
			  	  	
① U 4.190 SA/K-25 ② U 4.190 F/K-25 - mit Öl-Wasser-Kühler - with oil-to-water heat exchanger - avec réfrigérant à l'huile et à l'eau - con radiatore ad olio - acqua - con refrigerador aceite-agua		91		945318-00000	INNENSECHSKANTSCHRAUBE / ALLEN SCREW / VIS ALLEN / VITE ESAGONALE INTERNA / TORNILLO HEXAGONAL INTERIOR
		141		012223-26400	LEITUNG / PIPE / TUYAU / CONDOTTO / CONDUCTO
		142	012225 26400		LEITUNG / PIPE / TUYAU / CONDOTTO / CONDUCTO
		144	012212 26400	012224-26400	LEITUNG / PIPE / TUYAU / CONDOTTO / CONDUCTO
		146	012213 26400		LEITUNG / PIPE / TUYAU / CONDOTTO / CONDUCTO
		150	948420 00000	-	HOHLSCHRAUBE / HOLLOW SCREW / VIS CREUSE / VITE ESAGONALE / TORNILLO HUECO
		155	951202 00100	-	VERSCHLUSSSCHRAUBE / SCREW PLUG / BOUCHON FILETÉ / TAPPO A VITE / TAPÓN ROSCADO
		157		960201-26400	KUEHLER / COOLER / REFROIDISSEUR / RAFFREDDATORE / REFRIGERADOR
		159		012222-26400	LEITUNG / PIPE / TUYAU / CONDOTTO / CONDUCTO
		181	018304 26400	018301-26400	HAUBE / PROTECTING HOOD / CARTER PROTECTEUR / CARTER DI PROTEZIONE / SOMBRERETE
		193		949203-00000	ZAHNSCHEIBE / TOOTHED LOCK WASHER / RONDELLE À DENTS / RONDELLA DENTATA / ARANDELA DENTADA
		203	960207 26200		KÜHLER / COOLER / REFROIDISSEUR / RAFFREDDATORE / REFRIGERADOR
		205	969432 00000		L-VERSCHRAUBUNG / L-PIECE / L-PIECE / PEZZO A L / ATORNILLADURA
		209	922401 20000		SCHUTZGITTER / SAFETY GUARD / GRILLAGE DE PROTECTION / GABBIA DI PROTEZIONE / REJILLA DE PROTECCIÓN

²⁾ variantenabhängige Bauteile / variant-dependent components / composants variante-dependantes / componenti variante-dispendenti / componentes variante-dependientes