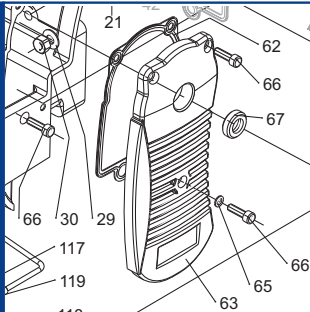


# U 4.40



**SERVICE**

**BECKER**  
D-42279 Wuppertal  
www.becker-international.com

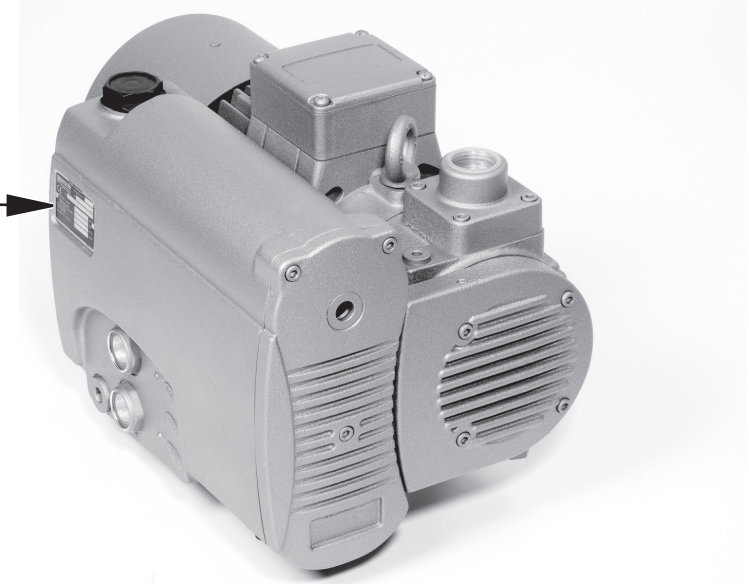
No. **C** year XXXX

type **U 4.40-XX**

frequency XXXX Hz  
speed XXXX min<sup>-1</sup>  
power required XXXX kW  
inlet capacity XXXX m<sup>3</sup>/h  
pressure + XXXX mbar  
vacuum - XXXX mbar

Made in  Germany

**Index Variante**



**Ersatzteilliste**  
**Spare parts list**  
**Liste de pièces de rechange**  
**Listino pezzi di ricambio**  
**Lista de piezas de recambio**  
Lista de peças sobresselentes  
Reserveonderdelenlijst  
Atsarginių dalių sąrašas  
Varuosad nimekirja  
Rezerves daļu saraksts

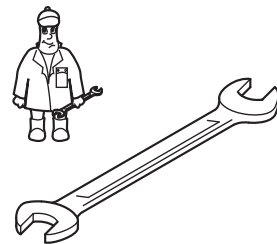
**Reservedelsliste**  
**Reservdelslista**  
**Varaosaluettelo**  
**Reservedelsliste**  
**Wykaz części zamiennych**  
**Tartalékalkatrész lista**  
**Seznam náhradních dílů**  
**Seznam nadomestnih delov**  
**Zoznam náhradných dielov**  
**Rezervni dijelovi popis**

**Lista pieselor de schimb**  
**Páirteanna spártha liosta**  
**Κατάλογος ανταλλακτικών**  
**Yedek parça listesi**  
**Списък на резервните части**  
**Перечень запасных частей**  
**スペアパーツリスト**  
**예비 부품 목록**  
**备用零件目录**

**SERVICE**

[www.becker-international.com](http://www.becker-international.com)

Sales and service network



**Wartung**  
**Maintenance**  
**Entretien**  
**Manutenzione**  
**Mantenimiento**



Pos.	Menge <sup>2)</sup> Quantity Quantité Quantità Cantidad	Bestell-Nr. Ident No. No. Identification No. Identificazione No. de pedido	Bezeichnung Description Designation Designazione Descripción
□	1	549000 40500	Dichtungssatz, Complete set of seals, Jeu de joints, Kit di guarnizioni, Junta Completa
7	SATZ/KIT	900585 00003	Schieber, Rotor Vane, Palette, Empujador
58	1	965414 00000	Luftentölelement, Oil separating element, Element separation huile, Cartuccia separatore olio, Elemento de desaceitar de aire

<sup>2)</sup> erforderliche Bestellmenge / necessary order quantity / quantité nécessaire / quantità di ordinazione necessari / cantidad necesario

U 4.40 (~3) Standard



Variante



U 4.40/XX

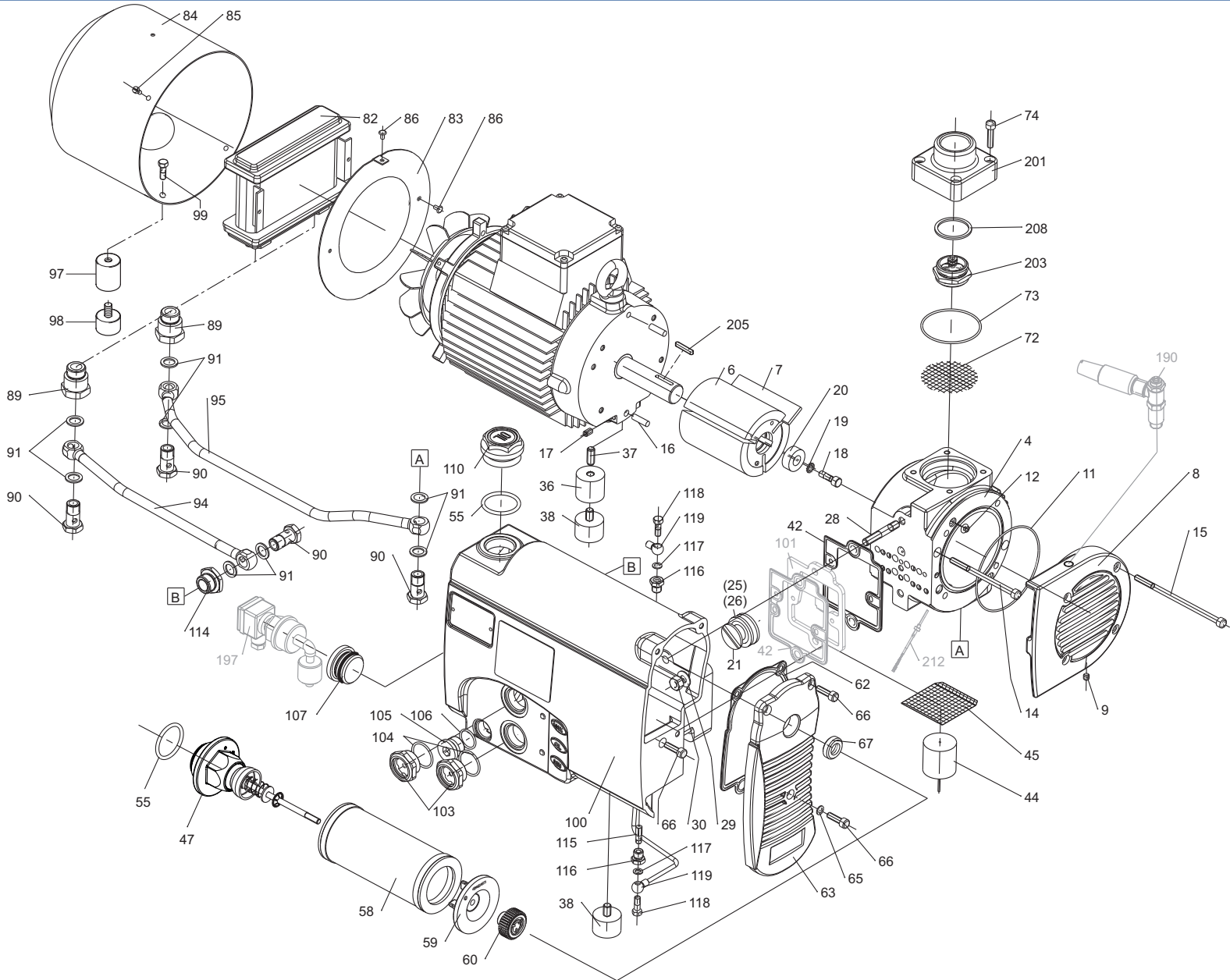
①

- UL zertifizierte Motoren
- UL certified motors
- Moteurs certifiés UL
- Motori con certificazione UL
- Motores con certificación UL

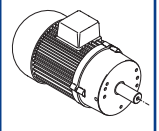
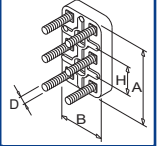
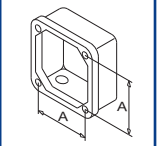
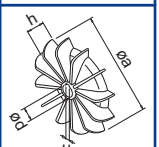
②

/09


- mit Gasballastventil
- with gas ballast valve
- avec l'este d'air
- con valvola di zavoratrice
- con valvula de lastre de gas






SERVICE ?


 C = ?  $\mu$ F  
 U = ? V 



C INDEX	Pos.	Bestell Nr.	Beschreibung	DE
U 4.40	□	549000 40500	<b>DICHTUNGSSATZ</b> <sup>1)</sup>	
	4	500102 40500	GEHÄUSE, KOMPLETT	
	6	020000 40500	KOLBEN	
	7	900585 00003	<b>SCHIEBER (SATZ)</b> <sup>2)</sup>	
	8	000701 40500	SEITENDECKEL	
	9	945618 00000	GEWINDESTIFT	
	14	945373 00000	INNENSECHSKANTSCHRAUBE	
	15	945374 00000	INNENSECHSKANTSCHRAUBE	
	16	947628 01000	ZYLINDERSTIFT	
	17	945801 01000	GEWINDESTIFT	
	18	901807 00000	WELLENENDSCHRAUBE	
	19	949203 00000	ZAHNSCHEIBE	
	20	016800 05000	SPANNSCHEIBE	
	21	537500 26200	VENTIL, KOMPL.	
	28	946917 00000	STIFTSCHRAUBE	
	29	917107 00000	TELLERFEDER	
	30	947105 00000	SECHSKANTMUTTER	
	36	068101 40500	ZWISCHENSTÜCK	
	37	945634 00000	GEWINDESTIFT	
	38	741310 60000	GUMMIPUFFER	
	44	867800 99559	SCHWIMMER	
45	005001 40300	SIEB		
47	727503 99628	ABBLASEVENTIL		
58	965414 00000	<b>LUFTENTÖLELEMENT (1x)</b> <sup>2)</sup>		
59	016802 40300	SPANNSCHEIBE		
60	921500 50000	HANDGRIFF		
63	003700 40500	DECKEL		
66	945320 00000	INNENSECHSKANTSCHRAUBE		
67	953116 00000	DÜSE		
72	005000 40500	SIEB		
74	945321 00000	INNENSECHSKANTSCHRAUBE		
82	960201 40500	KÜHLER		
83	917800 40500	HALTERRING		
85	946308 00000	ZYLINDERSCHRAUBE		
86	948750 00000	BLINDNIET		
89	912317 00000	ANSCHLUSS-SCHRAUBE		
90	948407 00000	HOHLSCHRAUBE		
94	012203 40500	LEITUNG		
95	012204 40500	LEITUNG		
97	068100 40300	STÜTZE		
98	741310 80000	GUMMIPUFFER		
99	945218 00000	SECHSKANTSCHRAUBE		
100	002402 40500	ÖLABSCHEIDERGEHÄUSE		
103	907309 00000	ÖLSCHAUGLAS		
105	951219 00000	VERSCHLUSS-SCHRAUBE		
107	951221 00100	VERSCHLUSS-SCHRAUBE		
110	916800 10000	SCHRAUBDECKEL		
114	912318 00000	ANSCHLUSS-SCHRAUBE		
115	003300 10700	DÜSE		
116	912300 00000	ANSCHLUSS-SCHRAUBE		
118	009400 19000	KUGELSTÜCKSCHRAUBE		
119	012200 40300	LEITUNG		
197	741103 99682	<b>NIVEAUGEBER - OPTIONAL</b>		
201	007801 40500	GEWINDEFLANSCH		
203	537506 99633	RÜCKSCHLAGVENTIL		
205	947701 00000	PASSFEDER		
212	943402 60000	TEMPERATURFÜHLER PT100 - <b>OPTIONAL</b>		

C INDEX	Pos.	Bestell Nr.	Beschreibung	DE
		960009 00000 960016 00100 960023 00100	<b>BECKER LUBE M 100 (MINERALÖL) - 1L</b> <b>BECKER LUBE S 100 (SYNTHETIKÖL) - 1L</b> <b>BECKER LUBE SL 100 (LEBENSMITTELBEREICH) - 1L</b>	
<sup>1)</sup> Dichtungssatz - 549000 40500 - Pos.: 11, 12, 25, 26, 42, 55, 62, 65, 73, 91, 104, 106, 117, 147, 208 <sup>2)</sup> erforderliche Bestellmenge / Wartung				


C INDEX	Pos.	Ident No.	Description	
U 4.40	▣	549000 40500	<b>SET OF SEALS</b> <sup>1)</sup>	
	4	500102 40500	PUMP BODY	
	6	020000 40500	ROTOR	
	7	900585 00003	<b>VANES (KIT)</b> <sup>2)</sup>	
	8	000701 40500	LID	
	9	945618 00000	THREADED PIN	
	14	945373 00000	SOCKET HEAD SCREW	
	15	945374 00000	SOCKET HEAD SCREW	
	16	947628 01000	STRAIGHT PIN	
	17	945801 01000	THREADED PIN	
	18	901807 00000	SCREW	
	19	949203 00000	TOOTHED SPRING WASHER	
	20	016800 05000	CLAMPING DISC	
	21	537500 26200	VALVE	
	28	946917 00000	STUD	
	29	917107 00000	CUP SPRING	
	30	947105 00000	HEX.NUT	
	36	068101 40500	FLANGES	
	37	945634 00000	THREADED PIN	
	38	741310 60000	RUBBER BUFFER	
	44	867800 99559	FLOAT	
	45	005001 40300	SIEVE	
	47	727503 99628	BLOW-OFF VALVE	
	58	965414 00000	<b>OIL SEPARATING ELEMENT (1x)</b> <sup>2)</sup>	
	59	016802 40300	CLAMPING DISC	
	60	921500 50000	HANDLE	
63	003700 40500	COVER		
66	945320 00000	SOCKET HEAD SCREW		
67	953116 00000	NOZZLE		
72	005000 40500	METAL FILTER		
74	945321 00000	SOCKET HEAD SCREW		
82	960201 40500	COOLER		
83	917800 40500	RETAINING RING		
85	946308 00000	CYLINDER SCREW		
86	948750 00000	BLIND RIVET		
89	912317 00000	CONNECTING SCREW		
90	948407 00000	HOLLOW SCREW		
94	012203 40500	PIPE		
95	012204 40500	PIPE		
97	068100 40300	SUPPORT PILLAR		
98	741310 80000	RUBBER BUFFER		
99	945218 00000	HEX. HEAD SCREW		
100	002402 40500	HOUSING FOR OIL SEPARATOR		
103	907309 00000	OIL SIGHT GLASS		
105	951219 00000	LOCKING SCREW		
107	951221 00100	LOCKING SCREW		
110	916800 10000	COVER		
114	912318 00000	CONNECTING SCREW		
115	003300 10700	NOZZLE		
116	912300 00000	CONNECTING SCREW		
118	009400 19000	HOLLOW HOLDING SCREW		
119	012200 40300	PIPE		
197	741103 99682	OIL LEVEL CONTROL - <b>OPTIONAL</b>		
201	007801 40500	SCREWED FLANGE		
203	537506 99633	NON RETURN VALVE		
205	947701 00000	KEY		
212	943402 60000	TEMPERATURE SENSOR - <b>OPTIONAL</b>		

C INDEX	Pos.	Ident No.	Description	
		960009 00000 960016 00100 960023 00100	<b>BECKER LUBE M 100</b> (MINERAL OIL) - 1L <b>BECKER LUBE S 100</b> (SYNTHETIC OIL) - 1L <b>BECKER LUBE SL 100</b> (FOOD SECTOR) - 1L	
<sup>1)</sup> Set of seals - 549000 40500 - Pos.: 11, 12, 25, 26, 42, 55, 62, 65, 73, 91, 104, 106, 117, 147, 208 <sup>2)</sup> necessary order quantity / maintenance				


C INDICE	Pos.	No. Identification	Designation	FR	
U 4.40	▣	549000 40500	JEU DE JOINTS <sup>1)</sup>		
	4	500102 40500	CARCASSE		
	6	020000 40500	PISTON		
	7	900585 00003	PALETTES (KIT) <sup>2)</sup>		
	8	000701 40500	COUVERCLE		
	9	945618 00000	GOUPILLE FILETEE		
	14	945373 00000	VIS HEXAGONALE INTERNE		
	15	945374 00000	VIS HEXAGONALE INTERNE		
	16	947628 01000	GOUPILLE CYLINDRIQUE		
	17	945801 01000	GOUPILLE FILETEE		
	18	901807 00000	VIS		
	19	949203 00000	DENT DISQUE		
	20	016800 05000	DISQUE DE SERRAGE		
	21	537500 26200	SOUPAPE		
	28	946917 00000	PRISONNIER		
	29	917107 00000	RESSORT BELLEVILLE		
	30	947105 00000	ECROU A 6 PANS		
	36	068101 40500	BRIDES		
	37	945634 00000	GOUPILLE FILETEE		
	38	741310 60000	AMORTISSEUR EN CAOUTCHOUC		
	44	867800 99559	PIED CAOUTCHOVE		
45	005001 40300	FILTRE			
47	727503 99628	SILENCIEUX			
58	965414 00000	ELEMENT SEPARATION HUILE (1x) <sup>2)</sup>			
59	016802 40300	DISQUE DE SERRAGE			
60	921500 50000	POIGNEE			
63	003700 40500	COUVERCLE			
66	945320 00000	VIS HEXAGONALE INTERNE			
67	953116 00000	BUSE			
72	005000 40500	FILTRE EN METAL			
74	945321 00000	VIS HEXAGONALE INTERNE			
82	960201 40500	REFROIDISSEUR			
83	917800 40500	BAGUE DE MAINTIENT			
85	946308 00000	TETE A VIS CYLINDRIQUE			
86	948750 00000	RIVET AVEUGLIE			
89	912317 00000	VIS DE RACCORD			
90	948407 00000	VIS CREUSE			
94	012203 40500	TUYAU			
95	012204 40500	TUYAU			
97	068100 40300	SUPPORT INTERMEDIAIRE			
98	741310 80000	AMORTISSEUR EN CAOUTCHOUC			
99	945218 00000	VIS HEXAGONALE			
100	002402 40500	CORP DE SEPARATEUR D'HUILE			
103	907309 00000	VERRE REGARD			
105	951219 00000	BOUCHON			
107	951221 00100	BOUCHON			
110	916800 10000	COUVERCLE			
114	912318 00000	VIS DE RACCORD			
115	003300 10700	GICLEUR			
116	912300 00000	VIS DE RACCORD			
118	009400 19000	VIS CREUSE DE FIXATION			
119	012200 40300	TUYAU			
197	741103 99682	INDICATEUR DE NIVEAU - EN OPTION			
201	007801 40500	BRIDE FILETEE			
203	537506 99633	SOUPAPE ANTI-RETOUR			
205	947701 00000	CLAVETTE			
212	943402 60000	SONDE DE TEMPÉRATURE - EN OPTION			




C INDICE	Pos.	No. Identification	Designation	FR	
		960009 00000 960016 00100 960023 00100	BECKER LUBE M 100 (HUILE MINÉRALE) - 1L BECKER LUBE S 100 (L'HUILE SYNTHÉTIQUE) - 1L BECKER LUBE SL 100 (SECTEUR DE L'ALIMENTATION) - 1L		
<sup>1)</sup> Jeu de joints - 549000 40500 - Pos.: 11, 12, 25, 26, 42, 55, 62, 65, 73, 91, 104, 106, 117, 147, 208 <sup>2)</sup> quantité nécessaire / entretien					

C INDICE	Pos.	No. Identificazione	Designazione	IT	
U 4.40	▣	549000 40500	<b>SERIE DI GUARNIZIONE <sup>1)</sup></b>		
	4	500102 40500	CARCASSA		
	6	020000 40500	ROTORE		
	7	900585 00003	<b>PALETTE (KIT) <sup>2)</sup></b>		
	8	000701 40500	COPERCHIO		
	9	945618 00000	SPINA FILETTATURA		
	14	945373 00000	VITE ESAGONALE INTERNA		
	15	945374 00000	VITE ESAGONALE INTERNA		
	16	947628 01000	PERNO		
	17	945801 01000	SPINA FILETTOTA		
	18	901807 00000	VITE		
	19	949203 00000	DISCO A DENTE		
	20	016800 05000	DISCO DI FISSAGGIO		
	21	537500 26200	VALVOLA		
	28	946917 00000	L'ASTA A VITE		
	29	917107 00000	MOLLA A DISCO		
	30	947105 00000	DADO ESAGONALE		
	36	068101 40500	FLANGE		
	37	945634 00000	SPINA FILETTATURA		
	38	741310 60000	AMMORTIZZATORE IN GOMMA		
	44	867800 99559	GALLEGGIANTE		
45	005001 40300	FILTRO			
47	727503 99628	SILENZIATORE			
58	965414 00000	<b>CARTUCCIA SEPARATORE OLIO (1x) <sup>2)</sup></b>			
59	016802 40300	DISCO DI FISSAGGIO			
60	921500 50000	MANETTA			
63	003700 40500	COPERCHIO			
66	945320 00000	VITE ESAGONALE INTERNA			
67	953116 00000	UGGELLO			
72	005000 40500	FILTRO METALLICO			
74	945321 00000	VITE ESAGONALE INTERNA			
82	960201 40500	RAFREDDATORE			
83	917800 40500	ANELLO PORTANTE			
85	946308 00000	VITE A TESTA CILINDRICA			
86	948750 00000	RIVETTO CIECO			
89	912317 00000	ATTACO FILETTATO			
90	948407 00000	VITE ESAGONALE			
94	012203 40500	CONDOTTO			
95	012204 40500	CONDOTTO			
97	068100 40300	SUPPORTO			
98	741310 80000	AMMORTIZZATORE IN GOMMA			
99	945218 00000	VITE ESAGONALE			
100	002402 40500	CARCASSA SEPARAZIONE OLIO			
103	907309 00000	SPIA LIVELLO OLIO			
105	951219 00000	VITE DI CHIUSURA			
107	951221 00100	VITE DI CHIUSURA			
110	916800 10000	COPERCHIO			
114	912318 00000	ATTACO FILETTATO			
115	003300 10700	UGELLO			
116	912300 00000	ATTACO FILETTATO			
118	009400 19000	VITE PASSAGGIO OLIO			
119	012200 40300	CONDOTTO			
197	741103 99682	SONDA D'OLIO - <b>OPTIONALE</b>			
201	007801 40500	FILANGIA			
203	537506 99633	VALVOLA NON RITORNO			
205	947701 00000	CHIAVETTA			
212	943402 60000	SONDA TERMICA - <b>OPTIONALE</b>			

C INDICE	Pos.	No. Identificazione	Designazione	IT	
		960009 00000 960016 00100 960023 00100	<b>BECKER LUBE M 100 (OLIO MINERALE) - 1L</b> <b>BECKER LUBE S 100 (OLIO SINTETICO) - 1L</b> <b>BECKER LUBE SL 100 (SETTORE ALIMENTARE) - 1L</b>		
<sup>1)</sup> Serie di guarnizione - 549000 40500 - Pos.: 11, 12, 25, 26, 42, 55, 62, 65, 73, 91, 104, 106, 117, 147, 208 <sup>2)</sup> quantità di ordinazione necessari / manutenzione					

C INDICE	Pos.	No. De pedido	Descripción	ES	
				ES	
U 4.40	▣	549000 40500	<b>JUNTA COMPLETA <sup>1)</sup></b>		
	4	500102 40500	CARCASA		
	6	020000 40500	ÉMBOLO		
	7	900585 00003	<b>EMPUJADOR (KIT) <sup>2)</sup></b>		
	8	000701 40500	TAPA LATERAL		
	9	945618 00000	VARILLA ROSCADA		
	14	945373 00000	TORNILLO HEXAGONAL INTERIOR		
	15	945374 00000	TORNILLO HEXAGONAL INTERIOR		
	16	947628 01000	PASADOR CILÍNDRICO		
	17	945801 01000	VARILLA ROSCADA		
	18	901807 00000	TORNILLO TERMINAL DE ÁRBOL		
	19	949203 00000	POLEA DENTADA		
	20	016800 05000	ARANDELA TENSORA		
	21	537500 26200	VÁLVULA COMPLETA		
	28	946917 00000	ESPÁRRAGO		
	29	917107 00000	MUELLE DE DISCO		
	30	947105 00000	TUERCA HEXAGONAL		
	36	068101 40500	APOYO		
	37	945634 00000	VARILLA ROSCADA		
	38	741310 60000	AMORTIGUADOR DE GOMA		
	44	867800 99559	FLOTADOR		
45	005001 40300	CRIBA			
47	727503 99628	VÁLVULA DE BARRIDO			
58	965414 00000	<b>ELEMENTO DE DESACEITAR DE AIRE (1x) <sup>2)</sup></b>			
59	016802 40300	ARANDELA TENSORA			
60	921500 50000	EMPUÑADURA			
63	003700 40500	TAPA			
66	945320 00000	TORNILLO HEXAGONAL INTERIOR			
67	953116 00000	TOBERA DE SILENCIADOR ACÚSTICO			
72	005000 40500	CRIBA			
74	945321 00000	TORNILLO HEXAGONAL INTERIOR			
82	960201 40500	REFRIGERADOR			
83	917800 40500	CHAPA LATERAL			
85	946308 00000	TORNILLO CILÍNDRICO			
86	948750 00000	REMACHE CIEGO			
89	912317 00000	TORNILLO DE EMPALME			
90	948407 00000	TORNILLO HUECO			
94	012203 40500	CONDUCTO			
95	012204 40500	CONDUCTO			
97	068100 40300	APOYO			
98	741310 80000	AMORTIGUADOR DE GOMA			
99	945218 00000	TORNILLO HEXAGONAL			
100	002402 40500	CARCASA DE SEPARADOR DE ACEITE			
103	907309 00000	CRISTAL MIRILLA DE ACEITE			
105	951219 00000	TORNILLO DE CIERRE			
107	951221 00100	TORNILLO DE CIERRE			
110	916800 10000	TAPA ROSCADA			
114	912318 00000	TORNILLO DE EMPALME			
115	003300 10700	TOBERA			
116	912300 00000	TORNILLO DE EMPALME			
118	009400 19000	TORNILLO DE PIEZA ESFÉRICA			
119	012200 40300	CONDUCTO			
197	741103 99682	GENERADOR DE NIVEL - <b>OPCIONAL</b>			
201	007801 40500	BRIDA ROSCADA			
203	537506 99633	VÁLVULA ANTIRRETORNO			
205	947701 00000	CHAVETA			
212	943402 60000	ELEMENTO TÉRMICO - <b>OPCIONAL</b>			

C INDICE	Pos.	No. De pedido	Descripción	ES	
				ES	
		960009 00000 960016 00100 960023 00100	<b>BECKER LUBE M 100 (ACEITE MINERAL) - 1L</b> <b>BECKER LUBE S 100 (ACEITE SINTÉTICO) - 1L</b> <b>BECKER LUBE SL 100 (SECTOR ALIMENTARIO) - 1L</b>		
<sup>1)</sup> Junta completa - 549000 40500 - Pos.: 11, 12, 25, 26, 42, 55, 62, 65, 73, 91, 104, 106, 117, 147, 208					
<sup>2)</sup> cantidad necesario / mantenimiento					

U 4.40	Variante 	Pos. <sup>2)</sup>	Bestell Nr. / Ident No. / No. Identification / No. Identificazione / No. De pedido		Beschreibung / Description / Designation / Designazione / Desripcion
					
① UL zertifizierte Motoren UL certified motors Moteurs certifiés UL Motori con certificazione UL Motores con certificación UL		28	946918 00000	946917-00000	STIFTSCHRAUBE / STUD / PRISONNIER / L'ASTA A VITE / ESPÁRRAGO
		42	003101 40500		(1x → 2x) DICHTUNG / GASKET / JOINT / GUARNIZIONE / JUNTA
		83	917802 40500	917800-40500	SEITENBLECH / SIDE PLATE / PANNEAU LATÉRAL / PANNELLO LATERALE / CHAPA LATERAL
		97	968100 40500	068100-40300	STÜTZE / SUPPORT PILLAR / SUPPORT INTERMEDIARE / SUPPORTO / APOYO
		101	068000 40500	-	ZWISCHENFLANSCH / INTERMEDIATE FLANGE / BRIDE INTERMÉDIAIRE / FLANGIA INTERMEDIA / BRIDA INTERMEDIO
② /09 - mit Gasballastventil - with gas ballast valve - avec l'este d'air - con valvola di zavoratrice - con valvula de lastre de gas		8	000702 40500	000701-40500	SEITENDECKEL / LID / COUVERCLE / COPERCHIO / TAPA LATERAL
		190	768717 99626		GASBALLASTVENTIL / GAS BALLAST VALVE / L'ESTE D'AIR / VALVOLA DI ZAVORATRICE / VÁLVULA DE LASTRE DE GAS

<sup>2)</sup> variantenabhängige Bauteile / variant-dependent components / composants variante-dependantes / componenti variante-dispendenti / componentes variante-dependientes